



**MAXAM**



TABLE OF CONTENTS:

OFF-THE-ROAD			pg#
Mobile Crane, Radial	<b>MSV01</b>	6	
	<b>MS202</b>	7	
E2/G2/L2, Radial	<b>MS203</b>	8	
E2/G2/L2, Bias	<b>MS912</b>	9	
	<b>MS300</b>	10	
E3/L3, Radial	<b>MS301</b>	11	
	<b>MS302</b>	12	
E3/L3, Bias	<b>MS913</b>	13	
	<b>MS303</b>	14	
	<b>MS305</b>	15	
E3 Scraper, Radial	<b>MS306</b>	16	
	<b>MS306+</b>	17	
	<b>MS401</b>	18	
	<b>MS401+</b>	19	
	<b>MS402</b>	20	
	<b>MS403</b>	21	
E4 Haulage, Radial	<b>MS412</b>	22	
	<b>MS440</b>	23	
	<b>MS453</b>	24	
	<b>MS409</b>	25	
	<b>MS405</b>	26	
E4/L4, Radial	<b>MS406</b>	27	
	<b>MS501</b>	28	
L5, Radial	<b>MS502</b>	29	
	<b>MS503</b>	30	
Loader, Solid	<b>MS708</b>	31	
CONSTRUCTION			pg#
Backhoe - Front 2WD, Bias	<b>MS900</b>	34	
	<b>MS901</b>	35	
	<b>MS902</b>	36	
Backhoe - Drive, Bias	<b>MS903</b>	37	
	<b>MS904</b>	38	
	<b>MS906</b>	39	
Skid Steer R4, Bias	<b>MS916</b>	40	
Skid Steer/Backhoe, Radial	<b>MS918R</b>	41	
Skid Steer/Backhoe L5, Bias	<b>MS907</b>	42	
	<b>MS705</b>	43	
	<b>MS706</b>	44	
Construction Pro	<b>MS705 XD</b>	45	
	<b>MS709</b>	46	
	<b>MS905</b>	47	
Telehandler/Grader, Bias	<b>MS915</b>	48	
Excavator, Bias	<b>MS908</b>	49	
Trencher	<b>MS926</b>	50	
Aerial Lift/Mini-Loader, Bias	<b>MS909</b>	51	
Multipurpose Radial	<b>MS910R</b>	52	
Paver, Bias	<b>MS922</b>	54	
Compactor, Bias	<b>MS938</b>	55	
INDUSTRIAL/PORT			pg#
Press-on Solid/Cushion	<b>MS601+</b>	58	
	<b>MS701+</b>	59	
Pneumatic Shaped Solid/ Resilient	<b>MS701 SM</b>	60	
	<b>MS702</b>	61	
Ground Support, Solid	<b>MS701 GSE</b>	62	
Industrial, Bias	<b>MS801</b>	63	
Ground Support, Bias	<b>MS802 GSE</b>	64	
Terminal Trailer, Solid	<b>MS707</b>	65	
Port, Solid	<b>MS703</b>	66	
Port, Bias	<b>MS803/MS804</b>	67	
	<b>MS307</b>	68	
Port, Radial	<b>MS407</b>	69	
FORESTRY			pg#
Log Skidder LS2	<b>MS930</b>	72	
	<b>MS931</b>	73	
Forestry Flotation HF4	<b>MS933</b>	74	
CHARTS & WARRANTY			pg#
Load and Inflation Pressure Charts		76	
Load Index and Speed Symbol Charts		86	
Maxam OTR Tire Limited Warranty		87	









**MAXAM**  
OTR TIRES





# MAXAM MSV01

## HIGHWAY SERVICE

For cranes operating in highway and off-the-road applications.

- F-speed rated (50mph/80kph)
- Low road noise and reduced vibration for improved operator comfort
- Excellent stability and handling response at highway speeds
- Deep tread grooves and traction lug pattern improve wet grip and off-road performance

Applications:



Size	Rating	Type	Rim	O.D.	S.W.	T.D.	Infl. P.	L.C.C. (lbs/kg)	L.I.
				in mm	in mm	32nds mm	psi KPa	50 mph 80 kph	
14.00R24 (385/95R24)	★★★	TT	10.00 W	54.3	15.3	29	130	13200	170F
				1379	389	23	900	6000	
14.00R25 (385/95R25)	★★★	TL	9.50/1.7 CR 10.00/1.5	54.3	15.3	29	130	13200	170F
				1379	389	23	900	6000	
16.00R25 (445/95R25)	★★★	TL	11.00/1.7 CR 11.25/2.0	58.9	17.5	33	130	14800	174F
				1495	444	26	900	6700	
20.5R25 (525/80R25)	★★★	TL	17.00/1.7 CR 17.00/2.0	58.7	21.1	37	102	16100	177F
				1490	535	30	700	7300	





# MAXAM MS202

## E2/G2/L2

For loaders, graders, telehandlers and articulated dump trucks operating in soft underfoot conditions. Ideal for use in dirt, mud, snow and ice.

- Siped block pattern for maximum traction
- Wear and cut resistant tread compound
- Self-cleaning tread with stone ejectors
- Approved for use in M+S (Mud and Snow) conditions

Applications:



Size	Rating	Type	Rim	O.D.	S.W.	T.D.	Infl. P.	L.C.C. (lbs/kg)	Infl. P.	L.C.C. (lbs/kg)	L.I.
				in mm	in mm	32nds mm	psi KPa	5 mph 10 kph	psi KPa	30 mph 50 kph	
14.00R24	★	TL	10.00VA	53.5	15.3	29	80	15200	69	9100	175A2/157B
				1359	388	23	550	6900	475	4125	
17.5R25	★★	TL	14.00/1.5	52.7	17.7	35	94	18700	76	12000	182A2/167B
				1339	449	28	650	8500	525	5450	
20.5R25	★★	TL	17.00/2.0	58.7	20.3	37	94	25400	76	16100	193A2/177B
				1491	516	30	650	11500	525	7300	
23.5R25	★★	TL	19.50/2.5	63.5	23.5	41	94	32000	76	20400	201A2/185B
				1613	596	33	650	14500	525	9250	
26.5R25	★★	TL	22.00/3.0	68.8	26.7	45	94	40800	76	25400	209A2/193B
				1748	679	36	650	18500	525	11500	
16.00R24	★	TL	10.00VA	57.3	17.0	33	54	10200			161A8
				1455	431	27	375	4625			







# MAXAM MS203

**E2/G2/L2**

Non-directional pattern designed to maximize traction in soft underfoot conditions. Ideal for use on graders, loaders and earthmovers.

- All-steel radial tire construction maximizes traction and flotation
- Wear and cut resistant tread compound
- Self-cleaning tread design

Applications:



Size	Rating	Type	Rim	O.D.	S.W.	T.D.	Infl. P.	L.C.C. (lbs/kg)	Infl. P.	L.C.C. (lbs/kg)	L.I.
				in mm	in mm	32nds mm	psi KPa	5 mph 10 kph	psi KPa	30 mph 50 kph	
14.00R24	★	TL	10.00VA	54.0	14.8	32	80	15200	69	9100	175A2/157B
				1371	376	25	550	6900	475	4125	
17.5R25	★	TL	14.00/1.5	53.1	17.5	35	73	15700	54	9100	176A2/157B
				1348	445	28	500	7100	375	4125	
20.5R25	★	TL	17.00/2.0	58.5	20.5	39	73	20900	54	12300	186A2/168B
				1486	521	31	500	9500	375	5600	
23.5R25	★	TL	19.50/2.5	63.1	23.9	42	73	26800	54	15700	195A2/176B
				1603	607	33	500	12150	375	7100	





# MAXAM MS912

## BIAS E2/G2/L2

Aggressive R4 pattern designed to maximize traction in soft underfoot conditions. Ideal for use on graders, loaders and earthmovers.

- Heavy duty bias construction maximizes traction and flotation
- Wear and cut resistant tread compound
- Self-cleaning tread design

Applications:



Size	P.R.	Type	Rim	O.D.	S.W.	T.D.	Infl. P.	L.C.C. (lbs/kg)	Infl. P.	L.C.C. (lbs/kg)	Infl. P.	L.C.C. (lbs/kg)	L.I.
				in mm	in mm	32hds mm	psi KPa	5 mph 10 kph	psi KPa	30 mph 50 kph	psi KPa	25 mph 40 kph	
15.5-25	12	TL	12.00/1.3	50.2	15.5	30	58	12300	36	7150	36	5840	149B/142A8/ 168A2
				1276	394	24	400	5600	250	3250	250	2650	
17.5-25	12	TL	14.00/1.5	53.1	17.3	31	51	13600	33	8050	29	6400	153B/145A8/ 171A2
				1350	439	25	350	6150	225	3650	200	2900	
	16			53.1	17.3	31	69	16100	44	9350	40	7400	158B/150A8/ 177A2
				1350	439	25	475	7300	300	4250	275	3350	
20.5-25	12	TL	17.00/2.0	58.3	20.9	35	36	14800	29	9900	25	7850	160B/152A8/ 174A2
				1482	530	28	250	6700	200	4500	175	3550	
	16			58.3	20.9	35	51	18200	40	12000	32	8800	167B/156A8/ 181A2
				1482	530	28	350	8250	275	5450	225	4000	







# MAXAM MS300

## E3/L3

Light duty E3/L3 lug pattern ideally suited to municipalities, small sand and aggregate operations as well as other smooth surface applications.

- Excellent traction in all off-road conditions
- Thick undertread for improved puncture resistance
- High quality casing allows for excellent retreadability
- Wear and cut resistant tread compound

Applications:



Size	Rating	Type	Rim	O.D.	S.W.	T.D.	Infl. P.	L.C.C. (lbs/kg)	Infl. P.	L.C.C. (lbs/kg)	L.I.
				in mm	in mm	32nds mm	psi KPa	5 mph 10 kph	psi KPa	30 mph 50 kph	
15.5R25	★★	TL	12.00/1.3	50.2	15.3	29	94	15700	76	9900	176A2/160B
				1274	389	23	650	7100	525	4500	
17.5R25	★★	TL	14.00/1.5	53.0	17.3	31	94	18700	76	12000	182A2/167B
				1346	440	25	650	8500	525	5450	
20.5R25	★★	TL	17.00/2.0	58.4	20.6	34	94	25400	76	16100	193A2/177B
				1493	524	27	650	11500	525	7300	
23.5R25	★★	TL	19.50/2.5	63.2	23.7	38	94	32000	76	20400	201A2/185B
				1605	601	30	650	14500	525	9250	
26.5R25	★★	TL	22.00/3.0	68.7	26.5	43	94	40800	76	25400	209A2/193B
				1739	669	34	650	18500	525	11500	
29.5R25	★★	TL	25.00/3.5	73.5	29.5	45	94	49400	76	30900	216A2/200B
				1866	751	36	650	22400	525	14000	







# MAXAM MS301

## E3/L3

Standard E3/L3 rock lug pattern combines excellent traction and high resistance to wear and cutting.

- Excellent traction in all off-road conditions
- Thick undertread for improved puncture resistance
- High quality casing allows for excellent retreadability
- Wear and cut resistant tread compound
- Wide, flat footprint profile for maximum stability and wear
- Increased net-to-gross for improved tread life

Applications:



Size	Rating	Type	Rim	O.D.	S.W.	T.D.	Infl. P.	L.C.C. (lbs/kg)	Infl. P.	L.C.C. (lbs/kg)	L.I.
				in	in	32nds	psi	5 mph	psi	30 mph	
				mm	mm	mm	KPa	10 kph	KPa	50 kph	
17.5R25	★★	TL	14.00/1.5	52.7	17.7	35	94	18700	76	12000	182A2/167B
				1339	449	28	650	8500	525	5450	
20.5R25	★★	TL	17.00/2.0	59.0	20.4	37	94	25400	76	16100	193A2/177B
				1499	517	30	650	11500	525	7300	
23.5R25	★★	TL	19.50/2.5	63.4	23.9	41	94	32000	76	20400	201A2/185B
				1611	608	33	650	14500	525	9250	
26.5R25	★★	TL	22.00/3.0	68.8	26.7	45	94	40800	76	25400	209A2/193B
				1748	679	36	650	18500	525	11500	
29.5R25	★★	TL	25.00/3.5	74.3	30.0	48	94	49400	76	30900	216A2/200B
				1886	763	38	650	22400	525	14000	





# MAXAM MS302

## E3/L3

Heavy duty E3/L3+ lug pattern combines excellent traction and high resistance to wear and cutting. Specifically designed to minimize vibration at haul speeds and provides the lowest cost-per-hour.

- Excellent traction in all off-road conditions
- Thick undertread for improved puncture resistance
- High quality casing allows for excellent retreadability
- Wear and cut resistant tread compound
- Wide, flat footprint profile for maximum stability and wear
- Increased net-to-gross and tread depth for highest tread life
- Offset, reinforced lugs minimize vibration at haul speeds

Applications:



Size	Rating	Type	Rim	O.D.	S.W.	T.D.	Infl. P.	L.C.C. (lbs/kg)	Infl. P.	L.C.C. (lbs/kg)	L.I.
				in mm	in mm	32nds mm	psi KPa	5 mph 10 kph	psi KPa	30 mph 50 kph	
20.5R25	★★	TL	17.00/2.0	58.8	20.5	42	94	25400	76	16100	193A2/177B
				1493	521	33	650	11500	525	7300	
23.5R25	★★	TL	19.50/2.5	63.5	23.6	47	94	32000	76	20400	201A2/185B
				1613	599	37	650	14500	525	9250	
26.5R25	★★	TL	22.00/3.0	68.6	26.5	50	94	40800	76	25400	209A2/193B
				1742	672	40	650	18500	525	11500	
29.5R25	★★	TL	25.00/3.5	74.5	30.0	53	94	49400	76	30900	216A2/200B
				1893	763	42	650	22400	525	14000	
550/65R25	★	TL	17.00/2.0	53.1	21.5	44	69	18700	62	13900	182A2/172B
				1347	547	35	475	8500	425	6300	
650/65R25	★★	TL	19.50/2.5	58.2	25.0	46	91	30900	62	17600	200A2/180B
				1479	636	37	625	14000	425	8000	
750/65R25	★★	TL	24.00/3.0	63.3	29.4	52	91	40800	62	23400	209A2/190B
				1608	747	41	625	18500	425	10600	
775/65R29	★★	TL	25.00/3.5	68.5	30.5	57	91	45400	62	26800	213A2/195B
				1740	775	45	625	20600	425	12150	
875/65R29	★★	TL	27.00/3.5	73.4	33.5	60	91	56800	62	34200	221A2/203B
				1865	851	48	625	25750	425	15500	







# MAXAM MS913

## BIAS E3/L3

Standard E3/L3 rock lug pattern combines excellent traction and high resistance to wear and cutting.

- Excellent traction in all off-road conditions
- Thick undertread for improved puncture resistance
- Wear and cut resistant tread compound

Applications:



Size	P.R.	Type	Rim	O.D.	S.W.	T.D.	Infl. P.	L.C.C. (lbs/kg)	Infl. P.	L.C.C. (lbs/kg)	L.I.
				in mm	in mm	32nds mm	psi KPa	5 mph 10 kph	psi KPa	30 mph 50 kph	
15.5-25	12	TL	12.00/1.3	50.5	15.6	30	58	12300	36	7150	168A2/149B
				1283	395	24	400	5600	250	3250	
17.5-25	16	TL	14.00/1.5	52.8	17.2	33	69	16100	44	9350	177A2/158B
				1341	437	26	475	7300	300	4250	
	20			53.3	17.9	33	83	18200	58	11000	181A2/164B
	1354			456	26	575	8250	400	5000		
20.5-25	16	TL	17.00/2.0	59.6	20.7	37	51	18200	40	12000	181A2/167B
				1514	527	29	350	8250	275	5450	
	20			58.8	20.5	37	65	20900	47	13200	186A2/170B
23.5-25	16	TL	19.50/2.5	1493	521	29	450	9500	325	6000	186A2/171B
				63.2	23.9	43	44	20900	33	13600	
	1605			607	34	300	9500	225	6150	191A2/179B	
	63.4			22.9	43	54	24000	44	16100		
	20			1611	583	34	375	10900	300		7300
	28			63.7	23.5	43	80	30000	58		19300
26.5-25	20	TL	22.00/3.0	1617	597	34	550	13600	400	8750	199A2/183B
				68.9	26.5	44	51	29100	36	18200	
	1750			673	35	350	13200	250	8250	198A2/181B	
	24			68.9	26.5	44	58	30900	44	20400	200A2/185B
	1750			673	35	400	14000	300	9250		
	28			68.9	26.5	44	69	34200	51	22000	203A2/188B
1750	673	35	475	15500	350	10000					







# MAXAM MS303

## E3

A high traction E3 pattern for use in scraper applications.

- Excellent traction in soft, wet and rocky conditions
- Reinforced shoulder and sidewall for improved cut resistance
- High strength bead designed to minimize wheel indexing at high torque
- Wear and cut resistant tread compound
- Self-cleaning tread ensures maximum traction in soft, wet and rocky conditions

Applications:



Size	Rating	Type	Rim	O.D.	S.W.	T.D.	Infl. P.	L.C.C. (lbs/kg)	L.I.
				in mm	in mm	32nds mm	psi KPa	30 mph 50 kph	
33.25R29	★★	TL	27.00/3.5	82.3	33.9	55	76	40800	209B
				2090	860	44	525	18500	
37.25R35	★★	TL	31.00/4.0	94.1	37.2	75	76	52000	218B
				2389	946	60	525	23600	





# MAXAM MS305

## E3

A high traction E3 pattern for use in dump truck applications.

- Excellent traction in all off-road conditions
- Deep undertread for improved puncture resistance
- Reinforced all-steel radial casing provides superior loading performance
- Wear and cut resistant tread compound
- Wide, flat footprint profile for maximum stability and wear

Applications:



Size	Rating	Type	Rim	O.D.	S.W.	T.D.	Infl. P.	L.C.C. (lbs/kg)	Infl. P.	L.C.C. (lbs/kg)	L.I.
				in mm	in mm	32nds mm	psi KPa	30 mph 50 kph	psi KPa	5 mph 10 kph	
13.00R25	★★★	TT	8.50/1.3	50.9	13.2	31	102	10700	138	18700	163B/182A2
			10.00W	1292	336	25	700	4875	950	8500	
14.00R24	★★★	TT	10.00W	53.5	14.4	34	102	12800	138	22000	169B/188A2
			8.5/1.3	1359	365	27	700	5800	950	10000	
14.00R25	★★★	TT	10.00/2.0	53.5	14.4	34	102	12800	138	22000	169B/188A2
			8.5/1.3	1359	365	27	700	5800	950	10000	







# MAXAM MS306

## E3

A high traction E3 pattern for use in dump truck applications.

- Excellent traction in all off-road conditions
- Deep undertread for improved puncture resistance
- Reinforced all-steel radial casing provides superior loading performance
- Wear and cut resistant tread compound
- Wide, flat footprint profile for maximum stability and wear

Applications:



Size	Rating	Type	Rim	O.D.	S.W.	T.D.	Infl. P.	L.C.C. (lbs/kg)	Infl. P.	L.C.C. (lbs/kg)	L.I.
				in mm	in mm	32nds mm	psi KPa	30 mph 50 kph	psi KPa	5 mph 10 kph	
13.00R25	★★★	TT	8.50/1.3	51.2	13.2	31	102	10700	138	18700	163B/182A2
			10.00W	1300	336	25	700	4875	950	8500	
14.00R24	★★★	TT	10.00W	53.5	14.4	34	102	12800	138	22000	169B/188A2
			8.5/1.3	1359	365	27	700	5800	950	10000	
14.00R25	★★★	TT	10.00/2.0	53.5	14.4	34	102	12800	138	22000	169B/188A2
			8.5/1.3	1359	365	27	700	5800	950	10000	
16.00R25	★★★	TT	11.25/2.5	58.5	17.1	35	102	16100	138	26800	177B/195A2
			8.5/1.3	1487	433	28	700	7300	950	12150	







# MAXAM MS306+

## E3

A high traction E3 pattern for use in dump truck applications.

- Increased tread depth allows for longer tread life
- Excellent traction in all off-road conditions
- Deep undertread for improved puncture resistance
- Reinforced all-steel radial casing provides superior loading performance
- Wear and cut resistant tread compound
- Wide, flat footprint profile for maximum stability and wear

Applications:



Size	Rating	Type	Rim	O.D.	S.W.	T.D.	Infl. P.	L.C.C. (lbs/kg)	Infl. P.	L.C.C. (lbs/kg)	L.I.
				in mm	in mm	32nds mm	psi KPa	30 mph 50 kph	psi KPa	5 mph 10 kph	
16.00R25	★★★	TT/TL	11.25/2.5	58.8	17.0	39	102	16100	138	26800	177B/195A2
				1493	432	31	700	7300	950	12150	





# MAXAM MS401

## E4

Deep grooved tread design provides excellent traction in rigid dump truck applications. Ideal for applications requiring maximum road grip and high site TKPH/TMPH.

- Excellent traction in all off-road conditions
- Deep tread grooves provide cooler running tread for high site TKPH/TMPH
- Wide, square footprint distributes load for minimal haul road disturbance
- Reinforced bead, shoulder and sidewall for increased cut resistance
- Heat resistant undertread reduces tire temperature
- Multiple tread compound options target specific site requirements

Applications:



Size	Rating	Type	Rim	O.D.	S.W.	T.D.	Tread Compound	TMPH/ TKPH	Infl. P.	L.C.C. (lbs/ kg)	L.I.					
				in mm	in mm	32nds mm						psi KPa	30 mph 50 kph			
12.00R24	★★★	TT / TL	8.50V	49.3	12.0	40	Standard	-	130	9900	160F					
				1251	305	32						Cut Resistant	82/120	109	12800	
14.00R24	★★★	TT	10.00W	55.1	15.6	45	Standard	62/91	750	5800	169B					
				1400	395	36						Cut Resistant	82/120	109	12800	
14.00R25	★★★	TT / TL	10.00/1.5	55.1	15.6	45	Standard	82/120	109	12800	169B					
				1400	395	36						Cut Resistant	62/91	750	5800	
18.00R25	★★	TL	13.00/2.5	65.7	19.4	62	Standard	-	102	20400	185B					
				1669	494	49						Cut Resistant	-	700	9250	
18.00R33	★★	TL	13.00/2.5	73.6	19.6	66	Standard	146/213	102	24000	191B					
				1876	497	52						Cut Resistant	118/173	700	10900	
21.00R33	★★	TL	15.00/3.0	78.0	21.8	77	Standard	187/273	102	30900	200B					
				1982	554	61						Cut Resistant	151/221	700	14000	
21.00R35	★★	TL	15.00/3.0	80.7	23.0	74	Standard	187/273	102	32000	201B					
				2050	584	58						Cut Resistant	151/221	700	14500	
24.00R35	★★	TL	17.00/3.5	85.8	26.1	83	Standard	247/361	102	40800	209B					
				2180	664	65						Cut Resistant	200/292	700	18500	
27.00R49	★★	TL	19.50/4.0	106.7	28.9	88	Standard	319/465	102	60000	223B					
				2710	734	71						Ultra Cut Resistant	257/375	-	700	27250
								429/627								







# MAXAM MS401+

## E4

Deep grooved tread design provides excellent traction in rigid dump truck applications. Enhanced casing and sizing optimized for high load, dual-mounted mining and logging trucks.

- Excellent traction in all off road conditions
- Reinforced bead, shoulder, and sidewall for increased cut resistance
- Heat resistant undertread reduces tire temperature
- Strengthened casing allows for higher load carrying capacity

Applications:



Size	Rating	Type	Rim	O.D.		S.W.		T.D.	Tread Compound	TMPH/ TKPH	Infl. P.		L.C.C. (lbs/kg)	L.I.
				in	mm	in	mm				psi	KPa		
27.00R49	★★	TL	19.50/4.0	107.0	28.9	81.0	Standard	343/500	102	60000	700	27250	223B	
				2719	734	102	Ultra Cut Resistant	240/350						
							Cut Resistant	298/435						
							Heat Resistant	398/580						





# MAXAM MS402

## E4

Deep grooved shoulder lugs and solid center bar provides exceptional traction and maximum tread life in rigid dump truck applications.

- Excellent traction on maintained haul roads
- Solid tread centerline minimizes vibration and increases tread life
- Wide, square footprint distributes load for minimal haul road disturbance
- Reinforced bead, shoulder and sidewall for increased cut resistance
- Heat resistant undertread reduces tire temperature
- Multiple tread compound options target specific site requirements

Applications:



Size	Rating	Type	Rim	O.D.	S.W.	T.D.	Tread Compound	TMPH/TKPH	Infl. P.	L.C.C.	L.I.
				in mm	in mm	32nds mm				(lbs/kg)	
18.00R33	★★	TL	13.00/2.5	73.6	19.6	66	Standard	145/212	102	24000	191B
				1869	497	52	Cut Resistant	116/169	700	10900	
24.00R35	★★	TL	17.00/3.5	85.9	26.0	71	Standard	226/330	102	40800	209B
				2183	661	56	Cut Resistant	182/265	700	18500	
27.00R49	★★	TL	19.50/4.0	106.4	29.0	82	Standard	291/425	102	60000	223B
							Ultra Cut Resistant	233/340	-	-	
				2703	737	65	Cut Resistant	-	700	27250	
30.00R51	★★	TL	22.00/4.5	114.2	33.9	93	Standard	393/574	102	74000	230B
							Ultra Cut Resistant	271/395	-	-	
				2901	860	74	Cut Resistant	322/470	700	33500	
							Heat Resistant	460/671			







# MAXAM MS403

## E4

A versatile tread design allows flexibility in applications from smooth haul roads to rough and rocky terrain while providing maximum productivity.

- Excellent traction in all haul road conditions
- Deep tread grooves provide cooler running tread for high site TKPH/TMPH
- E4+ deep tread for longest tire life
- Wide, square footprint distributes load for minimal haul road disturbance
- Reinforced bead, shoulder and sidewall for increased cut resistance
- Heat resistant undertread reduces tire temperature
- Multiple tread compound options target specific site requirements

Applications:



Size	Rating	Type	Rim	O.D.	S.W.	T.D.	Tread Compound	TMPH/ TKPH	Infl. P.	L.C.C. (lbs/kg)	L.I.				
				in mm	in mm	32nds mm			psi KPa	30 mph 50 kph					
27.00R49	★★	TL	19.50/4.0	106.7	28.9	94	Standard	346/505	102	60000	223B				
				2710	734	75	Ultra Cut Resistant	232/338							
				33.00R51	★★	TL	24.00/5.0	120.7	35.9	105		Standard	408/595	102	85500
								3066	912	84		Ultra Cut Resistant	272/397		
36.00R51	★★	TL	26.00/5.0	126.3	39.7	117	Standard	493/720	102	102000	241B				
				3209	1008	93	Cut Resistant	418/610							
				40.00R57	★★	TL	29.00/6.0	139.7	44.1	117		Standard	599/875	102	132500
3548	1120	93	Cut Resistant					500/730							
50/80R57	★★	TL	32.00/6.0	141.5	48.4	120	Standard	622/908	102	161000	257B				
				3593	1230	95	Cut Resistant	529/772							
				59/80R63	★★	TL	-	-	-	-		-	-	-	-
-	-	-	-					-	-	-	-				





**MAXAM**

# MS412

**E4**

A versatile tread design allows flexibility in applications from smooth haul roads to rough and rocky terrain while providing maximum productivity.

- Excellent traction in all haul road conditions
- Deep tread grooves provide cooler running tread for high site TKPH/TMPH

Applications:



Size	Rating	Type	Rim	O.D.	S.W.	T.D.	Tread Compound	TMPH/ TKPH	Infl. P.	L.C.C.	L.I.
				in mm	in mm	32nds mm				(lbs/kg)	
27.00R49	★★	TL	19.50/4.0	106.4	29.0	82	Standard	-	102	60000	223B
							Ultra Cut Resistant	-			
				2703	737	65	Cut Resistant	-	700	27250	
							Heat Resistant	-			







# MS440

**E4**



A versatile tread design allows flexibility in applications from smooth haul roads to rough and rocky terrain while providing maximum productivity.

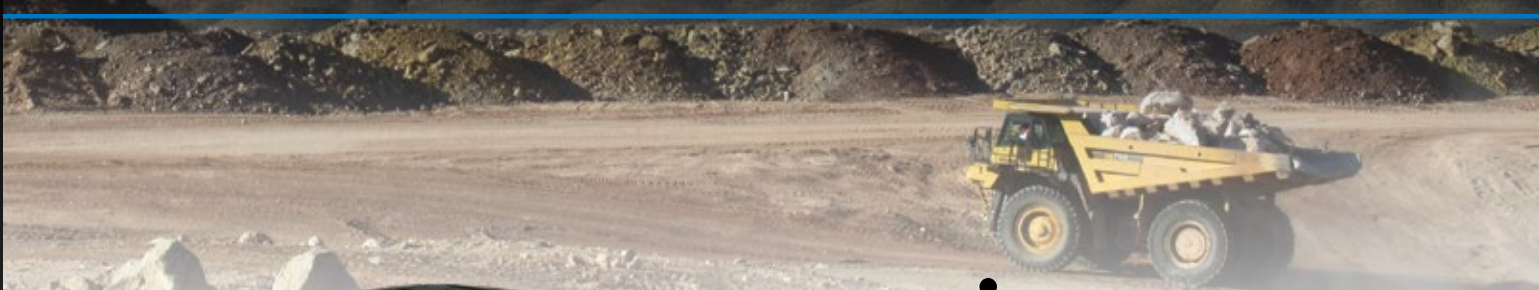
- Excellent traction in all haul road conditions
- Deep tread grooves provide cooler running tread for high site TKPH/TMPH
- E4+ deep tread for longest tire life
- Wide, square footprint distributes load for minimal haul road disturbance
- Reinforced bead, shoulder and sidewall for increased cut resistance
- Heat resistant undertread reduces tire temperature
- Multiple tread compound options target specific site requirements

Applications:



Size	Rating	Type	Rim	O.D.	S.W.	T.D.	Tread Compound	TMPH/ TKPH	Infl. P.	L.C.C. (lbs/kg)	L.I.
				in mm	in mm	32nds mm			psi KPa	30 mph 50 kph	
37.00R57	★★	TL	27.00/6.0	135.4	40.0	117	Standard	551/805	102	113500	245B
				3439	1016	93	Cut Resistant	452/660	700	51500	
							Heat Resistant	665/971			
46/90R57	★★	TL	32.00/6.0	141.5	46.0	117	Standard	603/880	102	139000	252B
				3594	1168	93	Cut Resistant	507/740	700	63000	
							Heat Resistant	712/1040			





# MAXAM MS453

## E4

A rugged and aggressive tread design that allows maximum tire life for the most demanding mining application.

- New reinforced sidewall, robust bead construction and enhanced tread belts to provide maximum protection and performance
- Highly engineered tread pattern designed to provide maximum resistance to severe conditions
- Deep tread depth delivers longer tire life and lower cost-per-hour
- Heat resistant undertread reduces tire temperature, increasing the tire's TKPH/TMPH
- Multiple tread compound options target specific site requirements

Applications:



Size	Rating	Type	Rim	O.D.	S.W.	T.D.	Tread Compound	TMPH/ TKPH	Infl. P.	L.C.C. (lbs/kg)	L.I.
				in mm	in mm	32nds mm			psi KPa	30 mph 50 kph	
53/80R63	★★	TL	36.00/5.0	150.7	51.3	138	Standard	683/997	102	182000	261B
				3828	1303	110	Cut Resistant	578/844	700	82500	
							Heat Resistant	836/1220			







# MAXAM MS409

## E4

A high traction E4 pattern for use in dump truck applications.

- Deep tread depth allows for longer tread life
- Excellent traction in all off-road conditions
- Deep undertread for improved puncture resistance
- Reinforced all-steel radial casing provides superior loading performance
- Wear and cut resistant tread compound
- Wide, flat footprint profile for maximum stability and wear

Applications:



Size	Rating	Type	Rim	O.D.	S.W.	T.D.	Infl. P.	L.C.C. (lbs/kg)	Infl. P.	L.C.C. (lbs/kg)	L.I.
				in mm	in mm	32nds mm	psi KPa	5 mph 10 kph	psi KPa	30 mph 50 kph	
14.00R25	★★★	TT	10.00/2.0	54.1	14.5	43	102	12800	138	22000	169B/188A2
			8.5/1.3	1373	368	34	700	5800	950	10000	





# MAXAM MS405

## DUMPXTRA E4/L4

Deep E4/L4 lug pattern combines excellent traction and high resistance to wear and cutting. Specifically designed to minimize vibration at haul speeds and provide the lowest cost-per-hour.

- Excellent traction in all off-road conditions
- Deep undertread for improved puncture resistance
- High quality casing allows for excellent retreadability
- Wear and cut resistant tread compound
- Wide, flat footprint profile for maximum stability and wear

Applications:



Size	Rating	Type	Rim	O.D.	S.W.	T.D.	Infl. P.	L.C.C. (lbs/kg)	Infl. P.	L.C.C. (lbs/kg)	L.I.
				in mm	in mm	32nds mm	psi KPa	5 mph 10 kph	psi KPa	30 mph 50 kph	
23.5R25	★★	TL	19.50/2.5	63.9	24.0	68	94	32000	76	20400	201A2/185B
				1623	609	54	650	14500	525	9250	
26.5R25	★★	TL	22.00/3.0	69.5	26.7	75	94	40800	76	25400	209A2/193B
				1765	679	60	650	18500	525	11500	
29.5R25	★★	TL	25.00/3.5	73.7	29.7	79	94	49400	76	30900	216A2/200B
				1872	755	63	650	22400	525	14000	
875/65R29	★★	TL	27.00/3.5	73.5	34.1	75	91	56800	62	34200	221A2/203B
				1866	866	60	625	25750	425	15500	
875/65R29	★★★	TL	27.00/3.5	73.6	34.0	75	116	68000	-	-	227A2
				1868	864	60	800	30750	-	-	







# MAXAM MS406

## E4/L4

Deep E4/L4 lug pattern combines excellent traction and high resistance to wear and cutting. Specifically designed to maximize traction in loader applications and provide the lowest cost-per-hour.

- Excellent traction in all off-road conditions
- Deep undertread for improved puncture resistance
- High quality casing allows for excellent retreadability
- Wear and cut resistant tread compound
- Wide, flat footprint profile for maximum stability and wear

Applications:



Size	Rating	Type	Rim	O.D.	S.W.	T.D.	Infl. P.	L.C.C. (lbs/kg)	Infl. P.	L.C.C. (lbs/kg)	L.I.
				in mm	in mm	32nds mm	psi KPa	5 mph 10 kph	psi KPa	30 mph 50 kph	
23.5R25	★★	TL	19.50/2.5	64.8	23.6	66	94	32000	76	20400	201A2/185B
				1645	601	52	650	14500	525	9250	
26.5R25	★★	TL	22.00/3.0	68.3	26.1	71	94	40800	76	25400	209A2/193B
				1736	662	56	650	18500	525	11500	
29.5R25	★★	TL	25.00/3.5	74.9	29.7	76	94	49400	76	30900	216A2/200B
				1903	755	60	650	22400	525	14000	
29.5R29	★★	TL	25.00/3.5	78.9	30.2	76	94	52000	76	33100	218A2/202B
				2005	766	60	650	23600	525	15000	
35/65R33	★★	TL	28.00/3.5	81.3	34.5	79	94	61500	76	38600	224A2/207B
				2066	877	63	650	28000	525	17500	
35/65R33	★★★★	TL	28.00/3.5	81.3	34.5	83	116	64000	-	-	225A8
				2066	877	66	800	29000	-	-	



# MAXAM MS501

## MINEXTRA - L5

For use in the most severe applications where traction and long tread life are required.

- Specialized mining compound for increased cut and impact resistance
- Extra deep L5 offset lug pattern combines excellent traction and high resistance to wear in all off-road conditions
- Deep undertread for improved puncture resistance
- Reinforced bead, shoulder and sidewall for increased cut resistance

Applications:



Size	Rating	Type	Rim	O.D.	S.W.	T.D.	Infl. P.	L.C.C. (lbs/kg)	L.I.
				in mm	in mm	32nds mm	psi KPa	5 mph 10 kph	
17.5R25	★★	TL	14.00/1.5	55.4	17.0	81	94	18700	182A2
				1408	433	64	650	8500	
20.5R25	★★	TL	17.00/2.0	60.9	20.9	90	94	25400	193A2
				1547	532	72	650	11500	
23.5R25	★★	TL	19.50/2.5	65.4	23.9	101	94	32000	201A2
				1662	608	80	650	14500	
26.5R25	★★	TL	22.00/3.0	70.7	26.6	110	94	40800	209A2
				1796	675	87	650	18500	
29.5R25	★★	TL	25.00/3.5	75.9	30.4	117	94	49400	216A2
				1928	772	93	650	22400	
29.5R29	★★	TL	25.00/3.5	79.2	30.7	123	94	52000	218A2
				2011	779	98	650	23600	
35/65R33	★★	TL	28.00/3.5	81.4	34.9	120	94	61500	224A2
				2068	886	95	650	28000	







# MAXAM MS502

## MINEXTRA - L5S

For equipment operating in highly abrasive material environments where maximum protection from penetrations and cuts is needed.

- Extra deep L5S design provides the highest resistance to wear and cutting, improving tire life and lowering operating cost
- Deep undertread for improved puncture resistance
- Reinforced bead, shoulder and sidewall for increased cut resistance
- Specialized mining compound for increased cut and impact resistance

Applications:



Size	Rating	Type	Rim	O.D.	S.W.	T.D.	Infl. P.	L.C.C. (lbs/kg)	L.I.
				in mm	in mm	32nds mm	psi KPa	5 mph 10 kph	
12.00R24	★★	TT	8.50V	50.0	12.3	70	120	15200	175A2
				1270	312	56	825	6900	
18.00R25	★★	TL	13.00/2.5	66.0	17.0	106	120	35300	204A2
				1677	433	84	825	16000	
17.5R25	★★	TL	14.00/1.5	55.4	19.7	91	94	18700	182A2
				1408	500	72	650	8500	
20.5R25	★★	TL	17.00/2.0	60.9	20.9	91	94	25400	193A2
				1547	532	72	650	11500	
23.5R25	★★	TL	19.50/2.5	65.6	23.8	108	94	32000	201A2
				1666	605	86	650	14500	
26.5R25	★★	TL	22.00/3.0	70.7	26.6	121	94	40800	209A2
				1796	675	96	650	18500	
29.5R25	★★	TL	25.00/3.5	75.9	30.4	131	94	49400	216A2
				1928	772	104	650	22400	
29.5R29	★★	TL	25.00/3.5	79.2	30.8	132	94	52000	218A2
				2011	783	105	650	23600	





# MAXAM MS503

## L5T

Extra deep, open lug L5 traction pattern combines excellent traction and high resistance to wear and cutting. Specifically designed to maximize service life in the harshest applications.

- Excellent traction in all off-road conditions
- Staggered tread blocks provide continuous ground contact for improved ride comfort
- Reinforced bead, shoulder and sidewall construction
- Squared shoulder design and wide footprint maximizes stability
- Stone and mud ejectors prevent debris buildup between lugs

Applications:



Size	Rating	Type	Rim	O.D.	S.W.	T.D.	Infl. P.	L.C.C. (lbs/kg)	L.I.
				in mm	in mm	32nds mm	psi KPa	5 mph 10 kph	
17.5R25	★★	TL	14.00/1.5	55.4	17.0	79	94	18700	182A2
				1408	433	63	650	8500	
20.5R25	★★	TL	17.00/2.0	60.9	20.9	91	94	25400	193A2
				1547	532	72	650	11500	
23.5R25	★★	TL	19.50/2.5	65.7	24.0	102	94	32000	201A2
				1668	610	81	650	14500	
26.5R25	★★	TL	22.00/3.0	70.7	26.6	109	94	40800	209A2
				1796	675	87	650	18500	
29.5R25	★★	TL	25.00/3.5	75.2	30.4	117	94	49400	216A2
				1910	772	93	650	22400	
29.5R29	★★	TL	25.00/3.5	78.2	30.7	126	94	52000	218A2
				1987	780	100	650	23600	
875/65R29	★★	TL	27.00/3.5	75.7	34.1	118	91	56800	221A2
				1922	866	94	625	25750	
35/65R33	★★	TL	28.00/3.5	81.4	34.9	125	94	61500	224A2
				2068	886	99	650	28000	







# MAXAM MS708

## OTR PRO

Applications:



Premium 3-stage solid OTR loader tire. Ideal for the most extreme OTR and construction applications. Extra deep tread allows for 3 to 5 times longer tire life vs pneumatic. Mounts on standard multi-piece earthmover rims.

- 3-stage, 100% rubber construction:
  - Ultra cut & wear resistant tread compound
  - Heat resistant cushion center compound

- Pure rubber base compound
- Internal hexagonal bead rings eliminate wheel slip
- Zero maintenance solid construction:
  - No flats due to punctures or sidewall damage
  - No routine air pressure checks
- Self-cleaning R4 tread pattern designed for maximum chunk resistance
- Aperture (AP) sidewall configuration designed to provide soft ride
- Smooth tread available to maximize tire life

Size	Tread	Sidewall	Rim	O.D.	S.W.	T.D.	L.C.C. (lbs/kg)		L.I.
				in mm	in mm	in mm	5 mph 10 kph	10 mph 15 kph	
17.5-25	SM	ST	14.00	53.0	17.8	6.1	24700	17890	192A2
		AP		1346	452	155	11200	8100	188A2
		AP		53.0	17.8	6.1	22230	16100	188A2
	TR	ST	14.00	1346	452	155	10090	7300	192A2
		AP		53.0	17.8	6.1	24700	17890	192A2
		AP		1346	452	155	10090	7300	188A2
20.5-25	SM	ST	17.00	58.8	20.8	7.4	35300	25570	204A2
		AP		1493	528	188	16010	11600	200A2
		AP		58.8	20.8	7.4	30900	22380	200A2
	TR	ST	17.00	1493	528	188	14020	10150	204A2
		AP		58.8	20.8	7.4	35300	25570	204A2
		AP		1493	528	188	16010	11600	200A2
23.5-25	SM	ST	19.50	64.0	23.5	8.6	44100	31950	212A2
		AP		1625	597	218	20000	14500	208A2
		AP		64.0	23.5	8.6	39700	28760	208A2
	TR	ST	19.50	1625	597	218	18000	13050	208A2
		AP		64.0	23.5	8.6	44100	31950	212A2
		AP		1625	597	218	20000	14500	208A2
26.5-25	SM	ST	22.00	68.4	27.0	9.5	53600	38830	219A2
		AP		1737	686	241	24300	17600	215A2
		AP		68.4	27.0	9.5	48100	34840	215A2
	TR	ST	22.00	1737	686	241	21800	15800	215A2
		AP		68.4	27.0	9.5	53600	38830	219A2
		AP		1737	686	241	24300	17600	215A2
29.5-25	SM	ST	25.00	73.0	29.7	10.4	66000	47810	226A2
		AP		1854	754	264	30000	21700	222A2
		AP		73.0	29.7	10.4	58400	42305	222A2
	TR	ST	25.00	1854	754	264	26500	19190	226A2
		AP		73.0	29.7	10.4	66000	47810	226A2
		AP		1854	754	264	30000	21700	222A2







**MAXAM**  
**CONSTRUCTION TIRES**



# MAXAM MS900

## BACKHOE - INDUSTRIAL SERVICE

Rib tread design for 2WD backhoe steer axles.

- Wide tread design for increased flotation
- Wear and cut resistant compound
- Deep undertread for improved puncture resistance

Applications:



Size	P.R.	Type	Rim	O.D.	S.W.	T.D.	Infl. P.	L.C.C. (lbs/kg)		L.I.
				in mm	in. mm	32nds mm		psi KPa	10 mph 15 kph	
11L-15SL	10	TL	8LB	30.6	11.1	15	52	3510	2340	110A8
				777	282	12	360	1590	1060	
11L-16SL	12	TL	8LB	31.7	11.1	17	64	4140	2760	116A8
				805	282	14	440	1875	1250	
14.5/75-16.1SL	10	TL	W11C	36.8	14.6	22	40	4800	3200	121A8
				935	371	17	275	2175	1450	







# MAXAM MS901

## BACKHOE - INDUSTRIAL SERVICE

Aggressive R4 tread pattern for applications requiring high traction.

- Wide tread design for increased flotation
- Wear and cut resistant compound
- Deep undertread for improved puncture resistance
- Reinforced bead and sidewall for excellent stability

Applications:



Size	P.R.	Type	Rim	O.D.	S.W.	T.D.	Infl. P.	L.C.C. (lbs/kg)		L.I.
				in mm	in. mm	32nds mm	psi KPa	5 mph 10 kph	25 mph 40 kph	
12.5/80-18 (340/80-18)	12	TL	W9	38.7	12.2	33	58	7500	6000	143A8
				983	310	26	400	3405	2725	
14.9-24	12	TL	W13	48.2	13.1	32	42	8000	6400	145A8
				1224	333	25	280	3625	2900	
16.9-24	12	TL	W15L	50.8	16.0	33	38	8940	7150	149A8
				1290	406	26	260	4060	3250	
18.4-26	12	TL	W16L	56.1	18.7	36	36	11000	8800	156A8
				1425	475	28	250	5000	4000	
16.9-28	12	TL	W15L	55.5	17.2	34	38	9815	7850	152A8
				1410	437	27	260	4500	3550	
18.4-28	12	TL	W16	57.1	17.4	36	36	11375	9100	157A8
				1450	442	28	250	5155	4125	





# MAXAM MS902

## BACKHOE - INDUSTRIAL SERVICE

Modified R1 tread pattern for excellent traction and flotation in soft underfoot conditions.

- Tread design optimized with self-cleaning mud breakers
- Center tie bar reduces vibration during over-the-road driving
- Deep undertread for improved puncture resistance
- Wear and cut resistant compound

Applications:



Size	P.R.	Type	Rim	O.D.	S.W.	T.D.	Infl. P.	Position	L.C.C. (lbs/kg)		L.I.
				in mm	in. mm	32nds mm	psi KPa		5 mph 10 kph	25 mph 40 kph	
12.5/80-18	12	TL	9.00	38.8	13.4	26	58	-	7500	6000	143A8
				986	340	21	400		3400	2725	
15.5/80-24 (400/80-24)	12	TL	13.00	50.0	15.5	35	44	-	11550	8250	154A8
				1270	394	28	300		5220	3750	
	14	TL	13.00	50.0	15.5	35	51	-	12320	8800	156A8
				1270	394	28	350		5600	4000	
16	TL	13.00	50.0	15.5	35	58	-	13510	9650	159A8	
			1270	394	28	400		6100	4375		
16.5/85-24	12	TL	13.00	52.0	16.4	35	40	FREE	14700	10500	162A8
				1321	417	28	275	DRIVE	10360	7400	150A8
	14	TL	13.00	52.0	16.4	35	48	FREE	15960	11400	165A8
				1321	417	28	330	DRIVE	7240	5150	153A8
	16	TL	13.00	52.0	16.4	35	55	FREE	11270	8050	168A8
				1321	417	28	380	DRIVE	5100	3650	156A8
16.5/85-28	10	TL	W13	54.9	15.2	35	33	FREE	17220	12300	168A8
				1394	386	28	225	DRIVE	7810	5600	156A8
16.5/85-28	10	TL	W13	54.9	15.2	35	33	FREE	12320	8800	156A8
				1394	386	28	225	DRIVE	5600	4000	144A8
16.5/85-28	10	TL	W13	54.9	15.2	35	33	FREE	8610	6150	144A8
				1394	386	28	225	DRIVE	3900	2800	144A8







# MAXAM MS903

## BACKHOE - INDUSTRIAL SERVICE

Modified R4 tread pattern for excellent traction and flotation in soft underfoot conditions.

- Tread design optimized with self-cleaning mud breakers
- Center tie bar reduces vibration during over-the-road driving
- Deep undertread for improved puncture resistance
- Wear and cut resistant compound

Applications:



Size	P.R.	Type	Rim	O.D.	S.W.	T.D.	Infl. P.	L.C.C. (lbs/kg)		L.I.
				in mm	in. mm	32nds mm	psi KPa	5 mph 10 kph	25 mph 40 kph	
18.4-26 (480/80-26)	12	TL	W16L	56.3	18.8	36	36	11000	8800	156A8
				1430	478	29	250	5000	4000	
18.4-26 (480/80-26)	16	TL	W16L	56.3	18.8	36	45	13125	10500	162A8
				1430	478	29	310	5940	4750	
16.9-28 (440/80-28)	12	TL	W15L	55.5	17.2	34	38	9815	7850	152A8
				1410	437	27	260	4440	3550	
16.9-28 (440/80-28)	14	TL	W15L	55.5	17.2	34	44	10690	8550	155A8
				1410	437	27	300	4840	3875	
16.9-30 (420/85-30)	12	TL	W15L	57.5	17.1	34	34	10060	8050	153A8
				1461	434	27	235	4560	3650	
16.9-30 (420/85-30)	14	TL	W15L	57.5	17.1	34	45	11000	8800	156A8
				1461	434	27	310	5000	4000	
18.4-30 (460/85-30)	12	TL	W16L	60.2	18.5	36	36	11690	9350	158A8
				1529	470	29	250	5310	4250	
18.4-30 (460/85-30)	14	TL	W16L	60.2	18.5	36	42	12375	9900	160A8
				1529	470.0	29.0	290	5625	4500	





# MAXAM MS904

## BACKHOE - INDUSTRIAL SERVICE

Modified R4 tread pattern for applications combining high off-road traction and excellent on road performance.

- Tread design optimized with self-cleaning mud breakers
- Center tie bar reduces vibration during over-the-road driving
- Deep undertread for improved puncture resistance
- Wear and cut resistant compound
- Increased net-to-gross for long tread life

Applications:



Size	P.R.	Type	Rim	O.D.	S.W.	T.D.	Infl. P.	L.C.C. (lbs/kg)		L.I.	
				in mm	in. mm	32nds mm	psi KPa	5 mph 10 kph	25 mph 40 kph		
17.5L-24 (460/70-24)	10	TL	W15L	48.8	17.5	33	32	7690	6150	144A8	
				1240	445	26	220	3500	2800		
	12	TL	W15L	48.8	17.5	33	38	8940	7150	149A8	
				1240	445	26	26	4060	3250		
	16	TL	W15L	48.8	17.5	33	46	11000	8800	156A8	
				1240	445	26	320	5000	4000		
19.5L-24 (500/70-24)	12	TL	W16L	51.7	19.5	34	33	9500	7600	151A8	
				1313	495	28	225	4310	3450		
	16	TL	W16L	51.7	19.5	34	42	11375	9100	157A8	
				1313	495	28	290	5150	4125		
	21L-24	12	TL	W18	53.3	20.0	35	32	10690	8550	155A8
					1354	508	28	220	4840	3875	







# MAXAM MS906

## SKID STEER

Deep R4 tread pattern designed for skid steer, backhoe and telehandler applications.

- Full, flat profile with self-cleaning stepped tread improves performance
- Center tie bar reduces vibration during over-the-road driving
- Deep undertread for improved puncture resistance
- Special cut resistant compound improves wear and reduces tread chunking

Applications:



Size	P.R.	Type	Rim	O.D.	S.W.	T.D.	Infl. P.	L.C.C. (lbs/kg)	
				in mm	in. mm	32nds mm	psi KPa	5 mph 10 kph	30 mph 50 kph
5.70-12	6	TL	4.50	22.4	5.7	18	60	1450	900
				569	145	14	415	660	410
23x8.50-12	6	TL	7JA	22.9	8.5	17	50	1820	1145
				583	214	13	340	825	515
	8	TL	7JA	22.9	8.5	17	65	2150	1355
				583	214	13	450	975	615
12	TL	7JA	22.9	8.5	17	75	2680	1690	
			583	214	13	515	1215	760	
27x8.50-15	8	TL	7JA	26.9	8.7	18	60	2910	1820
				682	221	14	415	1320	825
27x10-12	14	TL	8.00G	27.6	10.4	24	100	7800	5040
				701	254	19	690	3500	2250
7.00-15	6	TL	5.50	29.9	7.8	21	60	3180	2015
				760	198	16	415	1400	920
	8	TL	5.50	29.9	7.8	21	70	3640	2290
				760	198	16	480	1650	1030
31x15.50-15	8	TL	13LB	31.0	15.1	30	45	4400	2760
				787.0	384	23	310	2000	1250
10-16.5	10	TL	8.25	30.2	10.7	21	75	4710	2950
				768	271	16	515	2130	1330
12-16.5	12	TL	9.75	32.8	13.0	25	80	6320	4030
				834	331	20	550	2850	1830
14-17.5	14	TL	10.50	36.2	14.2	33	80	8540	5360
				920	360	26	550	3870	2430
15-19.5	14	TL	11.75	40.2	15.3	33	70	10060	6425
				1020	389	26	480	4560	2915
	16	TL	11.75	40.2	15.3	33	80	10880	6930
				1020	389	26	550.0	4935	3150





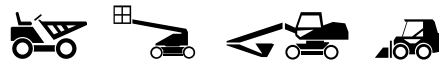
# MAXAM MS916

## SKID STEER

Deep R4 tread pattern designed for skid steer, backhoe and telehandler applications.

- Deep undertread for improved puncture resistance
- Special cut resistant compound improves wear and reduces tread chunking

Applications:



Size	P.R.	Type	Rim	O.D.	S.W.	T.D.	Infl. P.	L.C.C. (lbs/kg)	
				in mm	in mm	32nds mm	psi KPa	5 mph 10 kph	30 mph 50 kph
10-16.5	8	TL	8.25	30.4	10.4	19	60	4140	2950
				772	264	15	415	1900	1340
12-16.5	10	TL	9.75	32.8	12.4	23	65	5680	3520
				833	315	18	450	2575	1600
14-17.5	14	TL	10.50	36.2	13.8	25	80	8550	5360
				919	351	20	550	3875	2430







# MAXAM MS918R

## SKID STEER/BACKHOE

All-steel-radial, non-directional traction tire for skid steer and backhoe applications.

- High net-to-gross pattern provides exceptionally long tread life
- Lug siping improves traction in loose soil or snowy conditions
- All-steel-radial casing evenly distributes tire load for high flotation and minimal ground disturbance
- Steel belts stabilize tread and provide high resistance to puncture and impact

Applications:



Size	Alt Size	Type	Rim	O.D.		S.W.		T.D.		Inf. P.		L.C.C. (lbs/kg)		L.I.
				in	mm	in.	mm	32nds	mm	psi	KPa	5 mph	25 mph	
												10 kph	40 kph	
265/70R16.5	10R16.5	TL	8.25	30.4	774	10.4	264	23	18	90	620	5240	-	138A2
305/70R16.5	12R16.5	TL	9.75	32.7	831	12.1	307	28	23	90	620	6800	-	147A2
340/80R18	12.5/80R18	TL	11.00	39.4	1001	13.5	343	24	19	58	400	-	6000	143A8
500/70R24	19.5LR24	TL	W16L	51.7	1314	19.5	495	35	28	58	400	-	11000	164A8





# MAXAM MS907

## L5 SKID STEER AND BACKHOE

Extra deep, aggressive L5 tread pattern designed for skid steer, backhoe and telehandler applications.

- Full, flat profile with self-cleaning stepped tread improves performance
- Center tie bar reduces vibration during over-the-road driving
- Deep undertread for improved puncture resistance
- Special cut resistant compound improves wear and reduces tread chunking
- Increased net-to-gross for maximum tread life and lowest cost per hour

Applications:



Size	P.R.	Type	Rim	O.D.	S.W.	T.D.	Infl. P.	L.C.C. (lbs/kg)
				in mm	in. mm	32nds mm	psi KPa	5 mph 10 kph
23x8.50-12	8	TL	7JA	22.6	8.4	35	65	2150
				574	213	28	450	975
27x8.50-15	10	TL	7JA	27.0	8.7	38	75	3300
				686	221	30	515	1500
10-16.5	14	TL	8.25	31.3	10.9	44	105	5680
				795	278	35	620	1800
12-16.5	14	TL	9.75	33.1	13.0	44	90	6780
				842	330	35	620	3075
14-17.5	16	TL	10.50	36.8	14.1	46	90	9100
				935	357	36	620	4125
12.5/80-18	14	TL	W9	38.0	12.0	47	62	8260
				965	306	37	425	3745
	16	TL	W9	38.0	12.0	47	70	8940
				965	306	37	480	4055
19.5L-24	14	TL	W16L	51.1	19.3	48	38	10310
				1298	490	38	265	4680
21L-24	16	TL	W18	54.1	20.6	50	40	12375
				1374	523	40	275	5615
16.9-28	14	TL	W15L	55.5	17.7	48	45	10690
				1410	450	38	310	4850







# MAXAM MS705

## CONSTRUCTION PRO

Applications:



Premium 3-stage solid skid steer tire. Ideal for the most extreme OTR and construction applications. Extra deep tread allows for 3 to 5 times longer tire life vs pneumatic.

- 3-stage, 100% rubber construction:
  - Ultra cut and wear resistant tread compound
  - Heat resistant cushion center compound
  - Pure rubber base compound
  - Internal steel ring reinforcement eliminates wheel slip

- Zero maintenance solid construction:
  - No flats due to punctures or sidewall damage
  - No routine air pressure checks
- Self-cleaning R4 tread pattern designed for maximum chunk resistance
- Aperture (AP) sidewall configuration designed to provide soft ride
- Smooth tread available to maximize tire life

Size	Alt. Size	Tread	Sidewall	Rim	O.D.		T.D.		L.C.C. (lbs/kg)		L.I.
					in mm	in mm	in mm	5 mph 10 kph	10 mph 15 kph		
10-16.5	31x10-20	SM	ST	7.5x20	31.0 787	10.0 254	1.7 43	7850 3550	5690 2575	152A2	
		SM	AP	7.5x20	31.0 787	10.0 254	1.7 43	6950 3150	5030 2280	148A2	
		R4	ST	7.5x20	31.0 787	10.0 254	1.7 43	7850 3550	5690 2575	152A2	
		R4	AP	7.5x20	31.0 787	10.0 254	1.7 43	6950 3150	5030 2280	148A2	
12-16.5	33x12-20	SM	ST	7.5x20	33.0 838	11.0 279	2.2 56	8800 4000	6375 2900	156A2	
		SM	AP	7.5x20	33.0 838	11.0 279	2.2 56	7850 3550	5690 2575	152A2	
		R4	ST	7.5x20	33.0 838	11.0 279	2.2 56	8800 4000	6375 2900	156A2	
		R4	AP	7.5x20	33.0 838	11.0 279	2.2 56	7850 3550	5690 2575	152A2	
14-17.5	36x14-20	R4	ST	7.5x20	36.0 914	13.7 348	2.9 72	9650 4375	6990 3170	159A2	
		R4	AP	7.5x20	36.0 914	13.7 348	2.9 72	8550 3875	6190 3170	155A2	





# MAXAM MS706

## CONSTRUCTION PRO

Applications:



Premium 3-stage solid skid steer tire. Ideal for the most extreme OTR and construction applications. Extra deep tread allows for 3 to 5 times longer tire life vs pneumatic.

- 3-stage, 100% rubber construction:
  - Ultra cut and wear resistant tread compound
  - Heat resistant cushion center compound
  - Pure rubber base compound
  - Internal steel ring reinforcement eliminates wheel slip
- Zero maintenance solid construction:
  - No flats due to punctures or sidewall damage
  - No routine air pressure checks
- Solid centerline provides smoother running on hard surfaces and better chunk resistance on rocky ground

Size	Alt. Size	Rim	O.D.		T.D.	L.C.C. (lbs/kg)		L.I.
			in mm	S.W. in mm		5 mph 10 kph	10 mph 15 kph	
10-16.5	31x10-20	7.5x20	31.0	10.0	2.3	7850	5690	152A2
			787	254	58	3550	2570	
12-16.5	33x12-20	7.5x20	33.0	11.0	2.9	8800	6375	156A2
			838	279	74	4000	2900	
14-17.5	36x14-20	7.5x20	36.0	13.7	3.5	9650	6990	159A2
			914	348	89	4375	3170	







# MAXAM

## MS705 XD

### CONSTRUCTION PRO

Applications:



Premium mold-on solid skid steer tire. Ideal for the most extreme OTR and construction applications. Extra deep tread allows for 3 to 5 times longer tire life vs pneumatic.

- 100% cut resistant rubber construction
- Bonded tire/wheel assembly allows for easy bolt-on installation
- High strength carbon steel wheel
- Zero maintenance solid construction:
  - No flats due to punctures or sidewall damage
  - No routine air pressure checks
- Self-cleaning R4 tread pattern designed for maximum chunk resistance
- Aperture (AP) sidewall configuration designed to provide soft ride
- Smooth tread available to maximize tire life

Size	Alt. Size	Tread	Sidewall	O.D.		T.D.	L.C.C. (lbs/kg)		L.I.
				in mm	in mm		5 mph 10 kph	10 mph 15 kph	
10-16.5	31x6x10	SM	ST	31.0	10.0	1.7	7850	5690	152A2
				787	254	43	3550	2570	
		SM	AP	31.0	10.0	1.7	6950	5030	148A2
				787	254	43	3150	2280	
		R4	ST	31.0	10.0	1.7	7850	5690	152A2
				787	254	43	3550	2570	
		R4	AP	31.0	10.0	1.7	6950	5030	148A2
				787	254	43	3150	2280	
12-16.5	33x6x11	SM	ST	33.0	11.0	2.2	8800	6375	156A2
				838	279	56	4000	2900	
		SM	AP	33.0	11.0	2.2	7850	5690	152A2
				838	279	56	3550	2575	
		R4	ST	33.0	11.0	2.2	8800	6375	156A2
				838	279	56	4000	2900	
		R4	AP	33.0	11.0	2.2	7850	5690	152A2
				838	279	56	3550	2575	





# MAXAM MS709

## CONSTRUCTION PRO

Solid telehandler tire provides maintenance free performance and industry leading tread life.

- Extra deep, aggressive non-directional traction pattern
- Reinforced centerline eliminates lug flexing and tearing
- Specialized tread compound runs cooler and resists wear and chunking
- Zero maintenance airless tire construction
  - No flats due to punctures or sidewall damage
  - No routine air pressure checks
- Available as the tire-only or mounted assemblies for most telehandler machines

Applications:



Size	Alt Size	Tread	Sidewall	O.D.	S.W.	T.D.	L.C.C. (lbs/kg)	
				in mm	in mm	32nds mm	5 mph 10 kph	10 mph 15 kph
13.00-24	8.50	TR	AP	50.3	12.5	4.0	16500	14350
				1278	318	102	7500	6525
14.00-24	8.50	TR	AP	53.0	13.5	4.4	20900	18180
				1346	343	111	9500	8250







# MAXAM MS905

## GRADER / TELEHANDLER

Aggressive R4 tread pattern for use on graders and telehandlers where high traction is required.

- Tread design optimized with self-cleaning mud breakers
- Center tie bar reduces vibration during over-the-road driving
- Deep undertread for improved puncture resistance
- Wear and cut resistant compound

Applications:



Size	P.R.	Type	Rim	O.D.	S.W.	T.D.	Infl. P.	L.C.C. (lbs/kg)		L.I.
				in mm	in. mm	32nds mm	psi KPa	5 mph 10 kph	25 mph 40 kph	
13.00-24	12	TL	8.00TG	50.2	13.7	32	44	9550	6000	143A8
				1276	349	25	300	4360	2725	
	14	TL	8.00TG	50.2	13.7	32	51	10500	6600	146A8
				1276	349	25	350	4800	3000	
	16	TL	8.00TG	50.2	13.7	32	58	11400	7150	149A8
				1276	349	25	400	5200	3250	
14.00-24	12	TL	8.00TG	53.0	14.5	32	36	10390	6800	147A8
				1346	368	25	250	4700	3075	
	16	TL	8.00TG	53.0	14.5	32	51	12300	8050	153A8
				1346	368	25	350	5580	3650	





# MAXAM MS915

## GRADER - TELEHANDLER

Deep, non-directional traction pattern for telehandler and grader use.

- Excellent traction in all off-road conditions
- Thick undertread for improved puncture resistance
- Wear and cut resistant tread compound
- Wide, flat footprint profile for maximum stability and wear
- Increased net-to-gross and tread depth for highest tread life

Applications:



Size	P.R.	Type	Rim	Alt. Rim	O.D.	S.W.	T.D.	Infl. P.	L.C.C. (lbs/kg)	Infl. P.	L.C.C. (lbs/kg)	L.I.
					in mm	in mm	32nds mm	psi KPa	5 mph 10 kph	psi KPa	25 mph 40 kph	
13.00-24	12	TL	10.00VA	8.00TG	50.3	13.1	32	65	12300	44	6000	168A2/143A8
					1278	333	25	450	5600	300	2725	
	16		10.00VA	-	50.3	13.1	32	87	14300	58	7150	173A2/149A8
					1278	333	25	600	6500	400	3250	
14.00-24	12	TL	10.00VA	8.00TG	53.1	14.3	34	62	13900	36	6800	172A2/147A8
					1349	363	27	425	6300	250	3075	
	16		10.00VA	-	53.1	14.3	34	80	16100	51	8050	177A2/153A8
					1349	363	27	550	7300	350	3650	







# MAXAM MS908

## WHEELED EXCAVATOR

For use on wheeled excavators where traction and stability are required.

- Self-cleaning, open tread with mud breakers provides improved traction
- Reinforced sidewall for high stability and cut resistance
- Centerline tread tie bars reduces vibration during over-the-road driving

Applications:



Size	P.R.	Type	Rim	O.D.	S.W.	T.D.	Infl. P.	L.C.C. (lbs/kg)		L.I.
				in mm	in. mm	32nds mm	psi KPa	5 mph 10 kph	30 mph 50 kph	
8.25-20	14	TT	6.50	37.4	8.8	24	105	7640	4940	136B
				950	224	19	720	3460	2240	
9.00-20	14	TT	7.00	39.6	9.9	25	102	8540	5520	140B
				1006	251	20	700	3865	2500	
10.00-20	16	TT	7.50	41.4	10.8	26	108	10740	6950	148B
				1052	274	21	740	4875	3150	
11.00-20	16	TT	8.00	42.0	11.0	28	105	11450	7400	150B
				1067	279	22	720	5180	3350	





# MAXAM MS926

## TRENCHER

Designed for exceptional traction and flotation in muddy, off-road conditions. Ideal for use on trenchers and truck-mounted forklift applications.

- Aggressive traction pattern ideal in muddy ground conditions
- Wide tread profile for stability and flotation
- Reinforced sidewall improves impact resistance and protects rim from damage

Applications:



Size	P.R.	Type	Rim	O.D.	S.W.	T.D.	Inf. P.	L.C.C. (lbs/kg)	L.I.
				in mm	in. mm	32nds mm	psi KPa	25 mph 40 kph	
29 x 12.5-15	8	TT	10LB	30.6	11.9	23	40	2150	107A8
				777	301	18	275	975	
31 x 15.50-15	8	TL	13LB	32.1	15.2	24	45	4400	132A2
				815	387	19	310	2000	







# MAXAM MS909

## MULTIPURPOSE

For use in loader, earthmover and agricultural applications where high traction is required.

- Wide, open tread design for maximum flotation and traction on soft terrain
- Reinforced sidewall for high stability and cut resistance
- Center tie bar minimizes roading vibration
- Cut and wear resistant tread compound

Applications:



Size	P.R.	Type	Rim	O.D.	S.W.	T.D.	Infl. P.	L.C.C. (lbs/kg)	L.I.
				in mm	in. mm	32nds mm	psi KPa	30 mph 50 kph	
405/70-20 (16/70-20)	12	TL	13.00	42.4	16.2	42	46	6400	145B
				1077	411	33	320	2900	
	14	TL	13.00	42.4	16.2	42	51	7150	149B
				1077	411	33	350	3250	
	16	TL	13.00	42.4	16.2	42	58	7850	152B
				1077	411	33	400	3550	
405/70-24 (16/70-24)	14	TL	13.00	46.2	15.9	42	58	7850	152B
				1173	404	33	400	3550	
	16	TL	13.00	46.2	15.9	42	72	8800	156B
				1173	404	33	500	4000	
445/65-19.5 (18-19.5)	16	TL	14.00	43.1	18.0	34	85	9900	160B
				1095	457	27	585	4500	
	18	TL	14.00	43.1	18.0	34	100	11000	164B
				1095	457	27	690	5000	
445/65-22.5 (18-22.5)	16	TL	14.00	46.1	18.0	36	85	10700	163B
				1171	457	29	585	4875	
	18	TL	14.00	46.1	18.0	36	100	12000	167B
				1171	457	29	690	5450	





# MAXAM MS910R

## MULTIPURPOSE RADIAL

For use in loader, earthmover and agricultural applications where high traction is required.

- Versatile non-directional, off-the-road tread pattern
- Excellent on-road suitability
- All-steel radial construction for maximum durability, stability, traction and comfort
- Special self-cleaning design with dome mud breakers

Applications:



### Multipurpose Radial

Size	Type	Rim	O.D.		S.W.	T.D.	Speed	Infl. P.	L.C.C.	L.I.	
			in	mm	in	mm	32nds	mph	psi		lbs
335/80R18 MPT	TL	11.00	38.9	989	13.1	18.5	23	68	51	4400	132K
					334	18.5	110	350	2000		
335/80R20 MPT	TL	11.00	41	1041	13.1	18.5	23	68	94	7150	149K
					334	18.5	110	650	3250		







## Construction Applications

Size	Type	Rim	O.D.	S.W.	T.D.	Speed	Infl. P.	L.C.C.	L.I.
			in mm	in mm	32nds mm	mph kph	psi KPa	lbs kg	
335/80R18 EM	TL	11.00	38.9	13.1	23	6	54	6400	145A2
			989	334	18.5	10	375	2900	
365/70R18 EM	TL	11.00	38	14.3	26	6	54	6600	146A2
			966	363	20.5	10	375	3000	
405/70R18 EM	TL	13.00	40.3	15.9	26	6	54	8050	153A2
			1023	405	20.5	10	375	3650	
335/80R20 EM	TL	11.00	41	13.1	23	6	54	6800	147A2
			1041	334	18.5	10	375	3075	
365/80R20 EM	TL	11.00	42.9	14.3	23	6	54	8050	153A2
			1089	363	18.5	10	375	3650	
405/70R20 EM	TL	13.00	42.4	16.0	26	6	54	8550	155A2
			1076	407	20.5	10	375	3875	
405/70R24 EM	TL	13.00	46.5	16.1	26	6	54	9350	158A2
			1181	409	20.5	10	375	4250	

## Industrial Applications

Size	Type	Rim	O.D.	S.W.	T.D.	Speed	Infl. P.	L.C.C.	L.I.
			in mm	in mm	32nds mm	mph kph	psi KPa	lbs kg	
340/80R18 IND	TL	11.00	38.9	13.1	23	30	54	6000	143A8/B
			989	334	18.5	50	375	2725	
400/70R18 IND	TL	13.00	40.3	15.9	26	30	54	6800	147A8/B
			1023	405	20.5	50	375	3075	
460/70R24 IND	TL	14.00	49.2	18.1	30	30	54	9650	159A8/B
			1249	460	23.5	50	375	4375	





# MAXAM MS922

## E7 PAVER

Standard E7 rib pattern maximizes ground contact and tread life while minimizing compaction.

- Low pressure, high flotation E7 pattern
- Paver compound resists chemical degradation
- Wear and cut resistant tread compound

Applications:



Size	P.R.	Type	Rim	O.D.	S.W.	T.D.	Infl. P.	L.C.C. (lbs/kg)	L.I.
				in mm	in mm	32nds mm	psi KPa	5 mph 10 kph	
14.00-20	12	TT	10.00W	47.8	14.6	15	58	12000	167A2
				1214.0	370	12	400	5450	
14.00-20	14	TT	10.00W	47.8	14.6	15	69	13200	170A2
				1214.0	370	12	475	6000	
18.00-25	16	TL	10.00/1.5	60.7	18.1	20	58	22700	189A2
				1543	460	16	400	10300	
18.00-25	20	TL	10.00/1.5	60.7	18.1	20	69	25400	193A2
				1543	460	16	475	11500	
21.00-25	28	TL	15.00/3.0	66.4	22.2	22	83	36400	205A2
				1687	565	18	575	16500	







# MAXAM MS938

## R3 COMPACTOR

High flotation R3 pattern provides minimal ground compaction while providing excellent traction in field and paving applications.

- Excellent traction in all conditions
- Thick undertread for improved puncture resistance
- Low pressure minimizes soil disturbance
- Wear and cut resistant tread compound

Applications:



Size	P.R.	Type	Rim	O.D.	S.W.	T.D.	Infl. P.	L.C.C. (lbs/kg)		L.I.
				in mm	in mm	32nds mm	psi KPa	5 mph 10 kph	25 mph 40 kph	
23.1-26	12	TL	DW20	61.7	23.1	23	32	13400	8550	155A8
				1570	587	18	220	6100	3875	
28L-26	16	TL	DW25	62.6	28.2	34	36	17000	10500	162A8
				1590	717	27	250	7710	4750	









**MAXAM**  
**INDUSTRIAL TIRES**



# MAXAM MS601+

## INDUSTRIAL PRO

Applications:



Premium press-on band solid cushion tire optimized for durability and performance. Designed with a durable tread compound to supply 15% more wear resistance than the MS601. Enhanced mixing and building process ensures optimum performance in the working environment.

- Premium natural rubber compounds
- Chunk resistant, non-marking
- Low Rolling Resistance (LRR) black for high energy efficiency
- Product conforms to TRA and ETRTO global design standards
- Wide footprint for maximum grip and lifting stability
- Full tread profile provides uniform load distribution
- Outstanding chunk and tear resistance
- Deep tread configuration for superior traction

Size	Type		O.D.		S.W.		L.C.C. (lbs/kg)				
	SM	TR	in.	mm	in.	mm	6 mph/10 kph		10 mph/15 kph		10 mph/15 kph Other Vehicles
							Load Wheels	Steer Wheels	Load Wheels	Steer Wheels	
9 x 5 x 5	*	*	9.0	229	5.0	127	2115/960	1740/790	1885/855	1575/715	1500/680
10 x 4 x 6 1/2	*	*	10.0	254	4.0	102	1720/780	1410/640	1545/700	1300/590	1235/560
10 x 4 3/4 x 6 1/2	*	*	10.0	254	4.75	121	2095/950	1720/780	1865/845	1565/710	1490/675
10 x 5 x 6 1/2	*	*	10.0	254	5.0	127	2225/1010	1830/830	1995/905	1675/760	1600/725
10 1/2 x 5 x 6 1/2	*	*	10.5	267	5.0	127	2360/1070	1940/880	2115/960	1785/810	1700/770
12 x 4 1/2 x 8	*	*	12.0	305	4.5	114	2305/1045	1885/855	2050/930	1720/780	1630/740
12 x 5 1/2 x 8	*	*	12.0	305	5.5	140	2955/1340	2425/1100	2625/1190	2215/1005	2095/950
13 1/2 x 4 1/2 x 8	*	*	13.5	343	4.5	114	2535/1150	2070/940	2259/1025	1895/860	1810/820
13 1/2 x 5 1/2 x 8	*	*	13.5	343	5.5	140	3330/1510	2735/1240	2965/1345	2490/1130	2380/1080
14 x 4 1/2 x 8	*	*	14.00	356	4.5	114	2580/1170	2115/960	2305/1045	1930/875	1830/830
14 x 5 x 10	*	*	14.00	356	5.0	127	2940/1335	2415/1095	2635/1195	2205/1000	2105/955
15 x 4 x 11 1/4	*	*	15.00	381	4.0	102	1960/890	1610/730	1765/800	1480/670	1545/700
15 x 5 x 11 1/4	*	*	15.00	381	5.0	127	3065/1390	2515/1140	2735/1240	2295/1040	2170/985
16 x 5 x 10 1/2	*	*	16.00	406	5.0	127	3330/1510	2735/1240	2965/1345	2490/1130	2380/1080
16 x 6 x 10 1/2	*	*	16.00	406	6.0	152	4210/1910	3460/1570	3770/1710	3165/1435	3000/1360
16 x 7 x 10 1/2	*	*	16.00	406	7.0	178	5125/2325	4210/1910	4565/2070	3835/1740	3660/1660
16 1/4 x 5 x 11 1/4	*	*	16.25	413	5.0	127	3375/1530	2755/1250	3000/1360	2525/1145	2405/1090
16 1/4 x 6 x 11 1/4	*	*	16.25	413	6.0	152	4235/1920	3485/1580	3780/1715	3175/1440	3020/1370
16 1/4 x 7 x 11 1/4	*	*	16.25	413	7.0	178	5125/2325	4190/1900	4540/2060	3825/1735	3640/1650
16 x 2 1/2 x 13 3/4	*	*	16.00	406	2.5	63	1985/900	1620/735	1765/800	1490/675	1410/640
18 x 5 x 12 1/8	*	*	18.00	457	5.0	127	3615/1640	2975/1350	3240/1470	2710/1230	2580/1170
18 x 6 x 12 1/8	*	*	18.00	457	6.0	152	4630/2100	3790/1720	4125/1870	3470/1575	3305/1500
18 x 7 x 12 1/8	*	*	18.00	457	7.0	178	5620/2550	4630/2100	5025/2280	4210/1910	4010/1820
18 x 8 x 12 1/8	*	*	18.00	457	8.0	203	6615/3000	5455/2475	5910/2680	4960/2250	4740/2150
18 x 9 x 12 1/8	*	*	18.00	457	9.0	229	7605/3450	6285/2850	6810/3090	5730/2600	5455/2475
20 1/2 x 7 x 17 3/4	*	*	20.50	521	7.0	178	8025/3640	6580/2985	7145/3240	6020/2730	5700/2585
21 x 6 x 15	*	*	21.00	533	6.0	152	5180/2350	4255/1930	4630/2100	3890/1765	3705/1680
21 x 7 x 15	*	*	21.00	533	7.0	178	6340/2875	5180/2350	5645/2560	4740/2150	4520/2050
21 x 8 x 15	*	*	21.00	533	8.0	203	7440/3375	6120/2775	6670/3025	5600/2540	5345/2425
21 x 9 x 15	*	*	21.00	533	9.0	229	8600/3900	7055/3200	7660/3475	6435/2920	6120/2775
22 x 8 x 16	*	*	22.00	559	8.0	203	7715/3500	6340/2875	6900/3130	5785/2625	5510/2500
22 x 9 x 16	*	*	22.00	559	9.0	229	8930/4050	7330/3325	7935/3600	6670/3025	6340/2875
22 x 10 x 16	*	*	22.00	559	10.0	254	10085/4575	8270/3750	8995/4080	7550/3425	7165/3250
22 x 12 x 16	*	*	22.00	559	12.0	305	12400/5625	10195/4625	11090/5030	9315/4225	8875/4025
22 x 14 x 16	*	*	22.00	559	14.0	356	14770/6700	12135/5505	13185/5980	11080/5025	10550/4785
22 x 16 x 16	*	*	22.00	559	16.0	406	17075/7745	14020/6360	15245/6915	12810/5810	12190/5530
28 x 12 x 22	*	*	28.00	711	12.0	305	14860/6740	12215/5540	13270/6020	11155/5060	10625/4820
28 x 14 x 22	*	*	28.00	711	14.0	356	17680/8020	14530/6590	15785/7160	13270/6020	12610/5720
28 x 16 x 22	*	*	28.00	711	16.0	406	20435/9270	16800/7620	18080/8280	15320/6950	14595/6620
36 x 10 x 30	*	*	36.00	914	10.0	254	14575/6610	11950/5420	12965/5880	10925/4955	10350/4695





# MAXAM MS701+

## INDUSTRIAL PRO

Premium 3-stage solid resilient tire optimized for durability and performance. Designed with a durable tread compound to supply 15% more wear resistance. Improved center compound delivers 25% more heat resistance than the MS701. Enhanced mixing and building process ensures optimum performance in the working environment.

- Premium natural rubber compounds
- Cut and Tear resistant tread
- Chunk Resistant, Non-Marking (NM)
- Soft, heat resistant cushion center
- Pure rubber base compound
- Compounds do not contain crumb rubber or other fill materials
- Premium 3-Stage compound construction:
  - Evenly layered compound uniformity
  - Internal steel ring reinforcement eliminates wheel slip
- Wide footprint for maximum lifting stability
- Full tread profile for uniform load distribution
- Deep tread configuration for superior traction
- Product conforms to TRA and ETRTO global design standards
- Available in both Standard, and Swift (Clip/Halo/LOC) bead set configuration

Applications:



Size	Rim	Type		O.D.		S.W.		T.D.		L.C.C. (lbs/kg)	
		STD	SWIFT	in.	mm	in.	mm	in	mm	15 mph/25 kph	
										Load Wheels	Steer Wheels
15x4.1/2-8	3.00D	*	*	14.8	376	4.5	114	1.1	28	2295/1040	1765/800
	3.25I	*	*	14.8	376	4.5	114	1.1	28	2295/1040	1765/800
4.00-8	3.00D	*	*	16.1	409	4.1	104	1.4	36	2095/950	1610/730
5.00-8	3.00D	*	*	17.7	450	4.8	122	1.4	36	3120/1415	2405/1090
16x6-8	4.33R	*	*	16.2	411	5.9	150	1.2	30	3210/1455	2470/1120
18x7-8	4.33R	*	*	17.9	455	6.2	157	1.5	38	4730/2145	3640/1650
140/55-9	4.00E	*	*	14.9	378	5.1	130	1.1	28	2580/1170	1985/900
6.00-9	4.00E	*	*	20.6	523	5.4	137	1.7	43	4155/1885	3200/1450
21x8-9	6.00E	*	*	20.4	518	7.4	188	2.0	51	6075/2755	4675/2120
200/50-10	6.50F	*	*	18.1	460	7.5	190	1.6	41	5445/2470	4190/1900
6.50-10	5.00F	*	*	22.3	566	6.4	163	2.0	51	5160/2340	3970/1800
23x9-10	6.50F	*	*	23.0	584	8.0	203	2.2	56	7595/3445	5840/2650
23x10-12	8.00G	*	*	23.0	584	9.2	234	2.2	56	8310/3770	6395/2900
7.00-12	5.00S	*	*	25.7	653	6.8	173	2.2	56	6440/2920	4940/2240
27x10-12	8.00G	*	*	26.8	681	9.8	249	2.2	56	8600/3900	6610/3000
315/45-12	10.00G	*	*	22.5	571	11.1	282	2.2	56	9890/4485	7605/3450
28x9-15 (8.15-15)	7.00	*	*	27.0	686	8.6	218	2.0	51	8600/3900	6615/3000
28x12.5-15	9.75	*	*	28.1	714	11.3	287	2.2	56	12180/5525	9370/4250
7.00-15	5.50	*	*	28.7	729	7.0	178	2.2	56	7815/3545	6010/2725
	6.00	*	*	28.7	729	7.0	178	2.2	56	7815/3545	6010/2725
7.50-15	6.50	*	*	29.6	752	7.8	198	2.3	58	8600/3900	6615/3000
250-15	7.00	*	*	28.2	716	8.9	226	2.1	53	10230/4640	7870/3570
	7.50	*	*	28.2	716	8.9	226	2.1	53	10230/4640	7870/3570
8.25-15	6.50	*	*	32.0	813	8.3	211	2.8	71	10470/4750	8050/3650
300-15	8.00	*	*	32.1	815	10.1	256	2.6	66	12895/5850	9920/4500
355/65-15 (350-15)	9.75	*	*	32.2	818	12.3	312	3.5	89	17195/7800	13230/6000
400/60-15	11.00	*	*	32.4	823	13.1	333	3.3	84	19775/8970	15210/6900
355/50-20	10.00	*	*	33.3	846	12.7	323	2.6	66	19820/8990	15245/6915
	6.50	*	*	38.7	983	9.3	236	2.9	74	11905/5400	9920/4500
9.00-20	7.00	*	*	38.7	983	9.3	236	2.9	74	11905/5400	9920/4500
	7.50	*	*	38.7	983	9.3	236	2.9	74	11905/5400	9920/4500
10.00-20	7.00	*	*	40.7	1034	10.0	254	3.2	81	13230/6000	11025/5000
	7.50	*	*	40.7	1034	10.0	254	3.2	81	13230/6000	11025/5000
	8.00	*	*	40.7	1034	10.0	254	3.2	81	13230/6000	11025/5000
12.00-20	8.00	*	*	42.8	1087	11.3	287	3.4	86	16660/7560	13890/6300
	8.50	*	*	42.8	1087	11.3	287	3.4	86	16660/7560	13890/6300
	10.00	*	*	42.8	1087	11.3	287	3.4	86	17190/7800	14330/6500
12.00-24	8.50	*	*	47.0	1194	11.9	302	3.1	79	17720/8040	14770/6700
	10.00	*	*	47.0	1194	11.9	302	3.1	79	19840/9000	16535/7500
14.00-24	10.00	*	*	52.3	1328	12.9	328	4.3	109	24470/11100	20390/9250



# MAXAM MS701 SM

## INDUSTRIAL PRO

Premium 3-stage solid resilient tire.

- Smooth tread pattern for maximum tread life
- Premium natural rubber compounds:
  - Compounds do not contain crumb rubber or other fill materials
  - Cut and tear resistant tread
  - Chunk resistant non-marking (NM)
  - Soft, heat resistant cushion center
  - Pure rubber base compound
- Premium 3-stage compound construction:
  - Evenly layered compound uniformity
  - Internal steel ring reinforcement eliminates wheel slip
- Product conforms to TRA and ETRTO global design standards
- Wide footprint for maximum lifting stability
- Full tread profile for uniform load distribution
- Available in both Standard and Swift (Clip/Halo/LOC) bead set configuration

Applications:



Size	Rim	Type		O.D.		S.W.		T.D.		L.C.C. (lbs/kg)	
		STD	SWIFT	in.	mm	in.	mm	in.	mm	15 mph/25 kph	
										Load Wheels	Steer Wheels
18x9-8 SM	7.00	*	*	18.1	460	8.4	213	1.6	41	5590/2535	4300/1950
6.00-9 SM	4.00E	*	*	20.6	523	5.4	137	1.7	43	4155/1885	3200/1450
6.50-10 SM	5.00F	*	*	22.3	566	6.4	163	2.0	51	5160/2340	3970/1800
7.00-12 SM	5.00S	*	*	25.7	653	6.8	173	2.2	56	6440/2920	4940/2240
28x9-15 (8.15-15) SM	7.00	*	*	27.0	686	8.6	218	2.0	51	8600/3900	6610/3000
8.25-15 SM	6.50	*	*	32.0	813	8.3	211	2.8	71	10470/4750	8050/3650
10.00-20 SM	7.50	*		40.7	1034	10.0	254	3.2	81	13230/6000	11025/5000
	8.00	*		40.7	1034	10.0	254	3.2	81	13230/6000	11025/5000
12.00-20 SM	8.00	*		42.8	1087	11.3	287	3.4	86	16660/7560	13890/6300
	8.50	*		42.8	1087	11.3	287	3.4	86	16660/7560	13890/6300
	10.00	*		42.8	1087	11.3	287	3.4	86	17190/7800	14330/6500







# MAXAM MS702

## INDUSTRIAL STR

Premium 2-stage solid resilient tire.

- Premium natural rubber compounds:
  - Cut and tear resistant tread
  - Chunk resistant, non-marking (NM)
  - Premium nylon reinforced base compound
- 2-stage compound construction with steel torque rings
- Excellent stability
- Deep tread configuration for superior traction
- Available in both Standard, and Swift (Clip/Halo/LOC) bead set configuration

Applications:



Size	Rim	Type		O.D.		S.W.		T.D.		L.C.C. (lbs/kg)	
		STD	SWIFT	in.	mm	in.	mm	in.	mm	15 mph/25 kph	
										Load Wheels	Steer Wheels
100/80-8 SM	2.50C	*		14.3	363	4.3	109	0.9	23	2205/1000	1700/770
15x4.5-8 (125/75-8)	3.00D	*	*	14.7	373	4.2	107	1.1	28	2290/1040	1765800
	3.25I	*		14.7	373	4.2	107	1.1	28	2290/1040	1765800
15x4.5-8 (125/75-8) RIB	2.50C	*		14.7	373	4.2	107	1.1	28	2290/1040	1765800
	3.00D	*	*	14.7	373	4.2	107	1.1	28	2290/1040	1765800
400-8	3.00D	*	*	15.8	401	3.8	97	1.4	36	2095/950	1610/730
400-8 RIB	3.00D	*	*	15.8	401	3.8	97	1.4	36	2095/950	1610/730
5.00-8	3.00D	*	*	17.7	450	4.5	114	1.4	36	3120/1415	2400/1090
16x6-8	4.33R	*	*	16.1	409	5.5	140	1.2	30	3210/1455	2470/1120
18x7-8	4.33R	*	*	17.6	447	5.7	145	1.5	38	4730/2145	3640/1650
140/55-9	4.00E	*	*	14.6	371	4.8	122	1.1	28	2580/1170	1985/900
6.00-9	4.00E	*	*	20.5	521	5.2	132	1.6	41	4155/1885	3200/1450
6.00-9 RIB	4.00E	*	*	20.5	521	5.2	132	1.6	41	4155/1885	3200/1450
21x8-9	6.00E	*	*	20.2	513	7.0	178	2.0	51	6075/2755	4675/2120
200/50-10	6.50F	*	*	17.8	452	7.2	183	1.6	41	5445/2470	4190/1900
6.50-10	5.00F	*	*	22.3	566	6.0	152	2.0	51	5160/2340	3970/1800
23x9-10 (255/75-10)	6.50F	*	*	22.7	576	7.4	188	2.2	56	7595/3445	5840/2650
7.00-12	5.00S	*	*	25.4	645	6.4	163	2.1	53	6440/2920	4940/2240
27x10-12	8.00G	*	*	26.4	670	9.3	236	2.2	56	8600/3900	6610/3000
28x9-15 (8.15-15)	7.00	*	*	26.9	683	8.0	203	2.0	51	8600/3900	6610/3000
7.00-15	5.50	*	*	28.3	719	6.6	168	2.2	56	7815/3545	6010/2725
	5.50	*	*	29.4	747	7.4	188	2.3	58	8600/3900	6610/3000
7.50-15	6.50	*	*	29.4	747	7.4	188	2.3	58	8600/3900	6610/3000
	5.50	*	*	31.7	805	7.6	193	2.8	71	10175/4615	7825/3550
8.25-15	6.50	*	*	31.7	805	7.6	193	2.8	71	10470/4750	8045/3650
	7.00	*	*	28.0	711	8.2	208	2.1	53	10470/4750	8045/3650
250-15 (250/70-15)	7.50	*	*	28.0	711	8.2	208	2.1	53	10470/4750	8045/3650
300-15 (315/70-15)	8.00	*	*	31.8	808	9.5	241	2.5	63	12895/5850	9920/4500
355/65-15 (350-15)	9.75	*	*	32.0	813	11.5	292	3.5	89	17195/7800	13230/6000
10.00-20	7.00	*		40.4	1026	9.8	249	3.1	79	13230/6000	11025/5000
	7.50	*		40.4	1026	9.8	249	3.1	79	13230/6000	11025/5000
	8.00	*		40.4	1026	9.8	249	3.1	79	13230/6000	11025/5000
12.00-20	8.00	*		42.7	1084	10.9	277	3.4	86	16660/7560	13890/6300
	8.50	*		42.7	1084	10.9	277	3.4	86	16660/7560	13890/6300
	10.00	*		42.7	1084	10.9	277	3.4	86	17190/7800	14330/6500



# MAXAM

## MS701 GSE

### GROUND SUPPORT EQUIPMENT

Deep rib pattern and low rolling resistance provides the longest service life and lowest operating cost in ground support applications.

- Extra deep ribs provide exceptional grip in wet conditions
- Reduced vibration and improved stability
- Cool running, cushion center compound
- Low rolling resistance (LRR) tread compound
- Optional apertures for extra soft ride

Applications:



Size	Alt. Size	Rim	Sidewall	O.D.		S.W.		L.C.C. (lbs/kg)	
				in.	mm	in.	mm	6 mph/10 kph	10 mph/15 kph
4.00-8	4.80-8	3.00D	ST	16.0	406	4.6	117	2320/1050	1685/765
			AP	16.0	406	4.6	117	1970/895	1430/650
		3.75I	ST	16.0	406	4.6	117	2910/1320	2105/955
			AP	16.0	406	4.6	117	2470/1120	1800/815
5.00-8	5.70-8	3.75I	ST	17.8	452	5.3	135	3330/1510	2420/1100
			AP	17.8	452	5.3	135	2840/1290	2060/935
		4.25I	ST	17.8	452	5.3	135	3660/1660	2660/1205
			AP	17.8	452	5.3	135	3110/1410	2330/1055
		4.50K	ST	17.8	452	5.3	135	4010/1820	2905/1320
			AP	17.8	452	5.3	135	3410/1545	2470/1120







# MAXAM MS801

## INDUSTRIAL PNEUMATICS

Designed for use in multiple applications, the MS801 offers excellent traction and protection from punctures, as well as improved stability.

- Extra wide profile and reinforced sidewall for improved stability
- Thick undertread for maximum puncture resistance
- Self-cleaning industrial tread design provides excellent traction
- Cut and wear resistant compound

Applications:



Size	P.R.	Type	Rim	O.D.		S.W.		T.D.		Infl. P.	L.C.C. (lbs/kg)	
				in.	mm	in	mm	32nds	mm		15 mph/25 kph	
											Load Wheels	Steer Wheels
18x7-8	14	TT	4.33R	18.3	465	6.8	173	21	17	130/900	4160/1885	3200/1450
	16	TT	4.33R	18.3	465	6.8	173	21	17	145/1000	4730/2145	3640/1650
5.00-8	10	TT	3.00D	18.4	467	5.4	137	18	14	145/1000	3120/1415	2400/1090
6.00-9	10	TT	4.00	21.5	546	6.5	165	20	16	125/850	3785/1715	2910/1320
	12	TT	4.00	21.5	546	6.5	165	20	16	145/1000	4160/1885	3200/1450
23x9-10	18	TT	6.50F	23.0	584	9.0	229	24	19	130/900	6970/3160	5360/2430
	20	TT	6.50F	23.0	584	9.0	229	24	19	145/1000	7590/3445	5840/2650
6.50-10	10	TT	5.00	23.4	594	7.0	178	21	17	112/775	4290/1950	3300/1500
	12	TT	5.00	23.4	594	7.0	178	21	17	140/970	4730/2145	3640/1650
23x10-12	16	TT	8.00G	23.5	597	9.6	244	25	20	115/800	6970/3160	5360/2430
	20	TT	8.00G	23.5	597	9.6	244	25	20	145/1000	8320/3770	6400/2900
7.00-12	12	TT	5.00	26.7	678	7.7	196	22	17	123/850	5900/2680	4540/2060
	14	TT	5.00	26.7	678	7.7	196	22	17	130/900	6085/2755	4680/2120
27x10-12	16	TT	8.00G	26.9	683	10.0	254	29	23	115/800	8580/3900	6600/3000
	18	TT	8.00G	26.9	683	10.0	254	29	23	130/900	9295/4225	7150/3250
	20	TT	8.00G	26.9	683	10.0	254	29	23	145/1000	10205/4615	7850/3550
8.15-15 (28x9-15)	14	TT	7.00	27.9	709	8.7	221	23	18	145/1000	8580/3900	6600/3000
	18	TT	7.50BD	28.9	734	9.8	249	25	20	138/950	10465/4745	8050/3650
250-15	20	TT	7.50BD	28.9	734	9.8	249	25	20	145/1000	11115/5040	8550/3875
	14	TT	5.50BD	30.0	762	8.4	213	25	20	135/930	7385/3350	5680/2575
7.50-15	14	TT	6.00BD	32.0	813	8.7	221	25	20	135/930	7995/3640	6150/2800
8.25-15	14	TT	6.50	33.4	848	9.6	244	24	19	115/800	9295/4225	7150/3250
300-15	20	TT	8.00	33.2	843	11.7	297	30	24	130/900	14300/6500	11000/5000
	22	TT	8.00	33.2	843	11.7	297	30	24	145/1000	14820/6695	11400/5150
9.00-20	14	TT	7.00	40.9	1039	10.3	262	38	30	130/900	12870/5850	9900/4500
10.00-20	16	TT	7.50	42.4	1077	11.2	284	43	34	130/900	14300/6500	11000/5000
11.00-20	18	TT	8.00	43.6	1107	11.7	297	45	36	145/1000	17160/7800	13200/6000
12.00-20	24	TT	8.50	45.3	1150	12.5	317	48	38	145/1000	20410/9230	15700/7100
	28	TT	8.50	45.3	1150	12.5	317	48	38	150/1030	20930/9490	16100/7300
12.00-24	20	TT	8.50	49.2	1249	12.5	317	48	38	145/1000	21450/9750	16500/7500
14.00-24	28	TT	10.00W	53.9	1369	14.8	376	52	41	145/1000	28600/13000	22000/10000





# MAXAM MS802 GSE

## GROUND SUPPORT EQUIPMENT

For use in ground support, industrial and manufacturing applications, the MS802 GSE offers improved operating costs and reduced down time.

- Extra wide profile and reinforced sidewall for improved stability
- Thick undertread for maximum puncture resistance
- Extra deep rib tread provides exceptional wet grip
- Low rolling resistance (LRR) tread compound

Applications:



Size	P.R.	Type	Rim	O.D.		S.W.		T.D.		Infl. P.	L.C.C. (lbs/kg)	
				in.	mm	in.	mm	32nds	mm		psi/KPa	15 mph/25 kph Load Wheels
<b>MS802 GSE</b>												
18x7-8	16	TT	4.33R	18.1	460	6.6	168	20	16	145/1000	3640/1650	3060/1385
6.00-9 (6.90-9)	10	TT	4.00E	21.4	543	6.4	163	21	17	125/850	2910/1320	2445/1110
	12	TT	4.00E	21.4	543	6.4	163	21	17	145/1000	3200/1450	2690/1220
6.50-10	14	TT	5.00	23.5	597	7.5	190	20	16	145/1000	3960/1800	3325/1510
23x9-10	20	TT	6.50F	23.0	584	8.8	223	20	16	145/1000	5840/2650	4905/2225
7.00-12	16	TT	5.00	26.9	683	7.7	196	22	17	145/1000	4940/2240	4150/1880
165-13	8	TL	4.50	23.2	589	6.3	160	21	17	65/450	1760/800	1480/670
7.00-15	14	TT	5.50BD	29.8	757	8.2	208	23	18	135/930	5680/2575	4770/2165
7.50-15	16	TT	6.00BD	31.8	808	9.1	231	23	18	145/1000	6600/3000	5545/2520
8.25-15	14	TT	6.50	33.1	841	9.8	248	24	19	115/790	7150/3250	6005/2730
8.00-16.5	8	TL	6.00	29.0	736	8.0	203	20	16	65/450	3740/1700	3140/1430
8.75-16.5	10	TL	6.75	30.3	769	9.1	231	24	19	75/520	4800/2180	4030/1830
	12	TL	6.75	30.3	769	9.1	231	24	19	95/650	5520/2500	4635/2100
<b>MS802W</b>												
8.75-16.5	10	TL	6.75	30.3	770	9.1	230	30	24	75/520	4800/2180	4030/1830
	12	TL	6.75	30.3	770	9.1	230	30	24	95/650	5520/2500	4635/2100







# MAXAM MS707

## INDUSTRIAL PRO

Premium solid port tire for terminal trailers.

- SM tread maximizes tire life for lowest operating cost
- Premium Low Rolling Resistance (LRR) tread compound
  - Prevents heat failures
  - Reduces fuel consumption
  - Minimizes tire wear
- Full tread profile for uniform load distribution
- Available in multiple configurations
  - Standard and Swift (Clip/Halo/LOC) bead configuration
  - 2-stage or 3-stage tire construction
  - Dual mount assemblies or tire only

Applications:



Size	Rim	Type		O.D.		S.W.		T.D.		L.C.C. (lbs/kg)		
		STD	SWIFT	in.	mm	in.	mm	in.	mm	15 mph/25 kph		
											Load Wheels	Steer Wheels
10.00-20	7.50	*	*	39.5	1003	9.1	231	2.6	66	13225/6000	11025/5000	







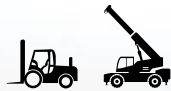
# MAXAM MS703

## INDUSTRIAL PRO

Premium 3-stage solid resilient tire designed for industrial and port applications.

- Premium natural rubber compounds:
  - Cut and tear resistant tread
  - Chunk resistant non-marking (NM)
  - Soft, heat resistant cushion center
- Premium 3-stage compound construction:
  - Evenly layered compound uniformity
  - Internal steel ring reinforcement eliminates wheel slip
- Product conforms to TRA and ETRTO global design standards
- Wide footprint for maximum lifting stability
- Full tread profile for uniform load distribution

Applications:



Size	Rim	Type		O.D.		S.W.		T.D.		L.C.C. (lbs/kg)	
		STD	SWIFT	in.	mm	in.	mm	in.	mm	6 mph/10 kph	10 mph/15 kph
16.00-25	11.25/2.0	*		56.9	1446	15.4	390	5.0	127	33740/15305	24430/11080
18.00-25	13.00/2.5	*		63.3	1607	18.9	480	5.7	145	44800/20320	32440/14715





# MAXAM

## MS803/ MS804

**BIAS PORT IND3 / IND4**

Designed for heavy loads and long cycle times typical of demanding port applications.

- Extra wide profile and reinforced sidewall for improved stability
- Multi-bead design to withstand extreme impact and shock loads
- Tread patterns designed to maximize tread life
- Cut and wear resistant compound
- High quality casing allows for excellent retreadability

Applications:



Size	P.R.	Type	Rim	O.D.		S.W.		T.D.		Infl. P.	L.C.C. (lbs/kg)	
				in	mm	in.	mm	32nds	mm		psi/KPa	Load Wheels
12.00-20 TR	20	TT	8.50	46.2	1173	12.3	312	25	20	145/1000	20410/9230	15700/7100
14.00-24 TR	28	TT	10.00W	53.5	1359	14.4	366	58	46	145/1000	28600/13000	22000/10000
16.00-25 SM	32	TL	11.25/2.0	60.9	1547	16.9	429	64	51	145/1000	35880/16250	27600/12500
18.00-25 SM	40	TL	13.00/2.5	65.9	1674	19.9	505	68	54	145/1000	50180/22750	38600/17500
18.00-33 SM	40	TL	13.00/2.5	73.7	1872	19.5	495	69	55	145/1000	60710/27560	46700/21200

\* Load ratings for counterbalanced industrial cyclic application. Please contact a MAXAM representative for other applications.





# MAXAM MS307

## PORTXTRA IND-3

All-steel radial industrial tires designed for heavy loads and long cycle times in port and marina applications. Belt-stabilized tread provides better traction, longer tread life and lower heat build up than bias construction tires.

- Belt-stabilized tread provides better traction and wear performance
- Extra wide profile and reinforced sidewall for improved stability
- Tread pattern designed to maximize tread life
- Cut and wear resistant compound
- High quality casing allows for excellent retreadability

### Applications



Size	Rating	Type	Rim	O.D.		S.W.		T.D.		Infl. P.	L.C.C. (lbs/kg)	L.I.
				in	mm	in.	mm	32nds	mm			
12.00R20	★★★	TT	8.50	45.0	1144	12.7	322	37	30	145/1000	20410/9230	176A5
12.00R24	★★★	TT	8.50	49.5	1256	12.4	314	37	30	145/1000	21450/9750	178A5
14.00R24	★★★	TT	10.00W	53.7	1364	14.7	374	48	38	145/1000	33020/14950	193A5
14.00R24	★★★	TL	10.00W	53.9	1369	14.9	378	48	38	145/1000	33020/14950	193A5

\* Load ratings for counterbalanced industrial cyclic application. Please contact a MAXAM representative for other applications.







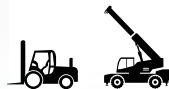
# MAXAM MS407

## PORTXTRA IND-4

All-steel radial industrial tires designed for heavy loads and long cycle times in port and marina applications. Belt-stabilized tread provides better traction, longer tread life and lower heat build up than bias construction tires.

- Belt-stabilized tread provides better traction and wear performance
- Extra wide profile and reinforced sidewall for improved stability
- Tread pattern designed to maximize tread life
- Cut and wear resistant compound
- High quality casing allows for excellent retreadability

### Applications



Size	Rating	Type	Rim	O.D.		S.W.		T.D.		Infl. P.	L.C.C. (lbs/kg)	L.I.
				in	mm	in.	mm	32nds	mm			
10.00R20	★★★	TT	7.50	41.9	1064	11.2	285	44	35	145/1000	15210/6890	166A5
12.00R20	★★★	TT	8.50	44.8	1138	11.8	299	52	41	145/1000	20410/9230	176A5
12.00R24	★★★	TT	8.50	49.4	1255	12.5	317	52	41	145/1000	21450/9750	178A5
14.00R24	★★★	TT	10.00W	55.6	1411	15.0	380	77	61	145/1000	33020/14950	193A5
14.00R24	★★★	TL	10.00W	55.6	1413	15.0	382	77	61	145/1000	33020/14950	193A5
14.00R25	★★★	TL	10.00/1.5	55.7	1415	14.8	377	78	62	145/1000	33020/14950	193A5
18.00R25	★★★	TL	13.00/2.5	64.8	1645	19.7	500	81	65	145/1000	50180/22750	207A5

\* Load ratings for counterbalanced industrial cyclic application. Please contact a MAXAM representative for other applications.









**MAXAM**  
**FORESTRY TIRES**



**MAXAM**

# MS930

## LOGXTRA - LS2 FORESTRY

Designed for use on demanding forestry equipment. High strength, belt-stabilized tire construction provides excellent traction and flotation in severe logging applications.

- Heavy duty shoulder and sidewall
- Maximum protection from cuts, impacts and punctures
- Cut resistant compound specifically engineered for forestry service
- Steel reinforced undertread
- Extra wide footprint provides exceptional flotation in muddy and wet ground conditions
- Nylon-wrapped beads prevent unwinding

Applications:



Size	P.R.	Type	Rim	O.D.	S.W.	T.D.	Infl. P.	L.C.C. (lbs/kg)	L.I.
				in mm	in mm	32nds mm	psi KPa	5mph 10kph	
28L-26	16	TL	DW25B	64.7 1644	28.1 714	72 57	35 240	14800 6700	174A2 / 162A6
	20	TL	DW25B	64.2 1632	27.9 709	72 57	40 275	16100 7300	177A2 / 165A6
	26	TL	DW25B	64.7 1644	28.1 714	72 57	55 380	20400 9250	185A2 / 173A6
24.5-32	20	TL	DH21	72.1 1831	24.5 622	76 60	45 310	18700 8500	182A2 / 170A6
30.5L-32	20	TL	DH27	72.7 1847	30.5 775	76 60	35 240	18700 8500	182A2 / 170A6
	26	TL	DH27	72.7 1847	30.2 768	76 60	45 310	22000 10000	188A2 / 176A6
	32	TL	DH27	72.7 1847	30.2 775	76 60	55 380	24700 11200	192A2 / 180A6
35.5L-32	26	TL	DH31	79.3 2016	35.2 895	79 63	40 275	26800 12150	195A2 / 183A6
	30	TL	DH31	79.2 2011	35.5 902	79 63	45 310	29100 13200	198A2 / 186A6







# MAXAM MS931

## LOGXTRA - LS2 FORESTRY

Designed for use on demanding forestry equipment. High strength, belt stabilized tire construction provides excellent traction and flotation in severe logging applications.

- Heavy duty shoulder and sidewall
- Maximum protection from cuts, impacts and punctures
- Cut resistant compound specifically engineered for forestry service
- Steel reinforced undertread
- Extra wide footprint provides exceptional flotation in muddy and wet ground conditions
- Nylon-wrapped beads prevent unwinding

Applications:



Size	P.R.	Type	Rim	O.D.	S.W.	T.D.	Infl. P.	L.C.C.	L.I.
				in mm	in mm	32nds mm	psi KPa	(lbs/kg) 5 mph 10 kph	
23.1-26	16	TL	DW20B	63.8	22.8	72	40	13900	172A2 /
				1620	580	58	275	6300	160A6
28L-26	16	TL	DW25B	63.9	28.0	76	35	14800	174A2 /
				1624	710	60	240	6700	162A6
	20	TL	DW25B	64.1	27.8	76	40	16100	177A2 /
				1628	707	60	275	7300	165A6
26	TL	DW25B	64.1	27.8	76	55	20400	185A2 /	
			1628	707	60	380	9250	173A6	
24.5-32	20	TL	DH21	72.1	24.5	75	45	18700	182A2 /
				1831	622	60	310	8500	170A6
30.5L-32	20	TL	DH27	73.0	30.3	82	35	18700	182A2 /
				1855	769	65	240	8500	170A6
	26	TL	DH27	73.0	30.2	82	45	22000	188A2 /
				1855	768	65	310	10000	176A6
32	TL	DH27	73.0	30.2	82	55	24700	192A2 /	
			1855	768	65	380	11200	180A6	
35.5L-32	26	TL	DH31	79.2	35.5	84	40	26800	195A2 /
				2011	902	67	275	12150	183A6
	30	TL	DH31	79.2	35.5	84	45	29100	198A2 /
				2011	902	67	310	13200	186A6







**MAXAM**

# MS933

## LOGXTRA - HIGH FLOTATION HF4

Designed for use on demanding forestry equipment. High strength, belt stabilized tire construction provides excellent traction and flotation in severe logging applications.

- Heavy duty shoulder and sidewall
- Maximum protection from cuts, impacts and punctures
- Cut resistant compound specifically engineered for forestry service
- Steel reinforced undertread
- Extra wide footprint provides exceptional flotation in muddy and wet ground conditions
- Nylon-wrapped beads prevent unwinding

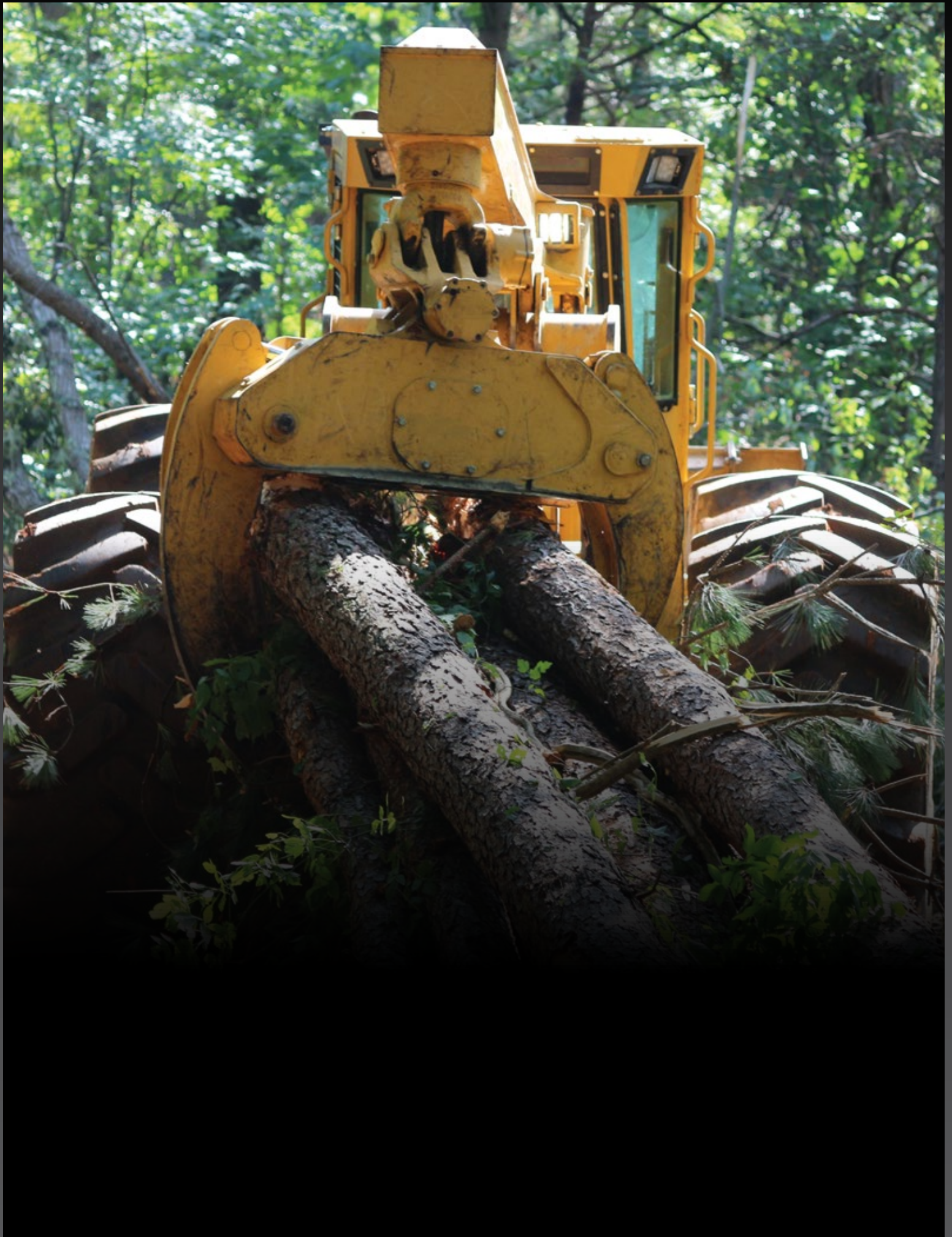
Applications:



Size	P.R.	Type	Rim	O.D.	S.W.	T.D.	Infl. P.	L.C.C. (lbs/kg)		L.I.
				in mm	in mm	32nds mm	psi KPa	5mph 10kph	30mph 50kph	
66x43.00-25	20	TL	36.0TH	68.8	40.9	120	50	23400	14800	174B
				1748	1040	95	340	10600	6700	
66x43.00-26	20	TL	DW36B	68.8	40.9	120	50	23400	14800	174B
				1748	1040	95	340	10600	6700	
67x34.00-25	20	TL	30.0TH	69.9	33.9	120	55	25400	16100	177B
				1775	861	95	380	11500	7300	
67x34.00-26	20	TL	DW30B	69.9	33.9	120	55	24700	15700	176B
				1775	861	95	380	11200	7100	
73x44.00-32	20	TL	DH36	75.3	44.0	96	50	27600	17600	180B
				1913	1118	76	350	12500	8000	
73x50.00-32	20	TL	DH44	76.5	50.0	96	45	26800	17100	179B
				1943	1270	76	310	12150	7750	







## Load and Inflation Pressure Charts

### MSV01 - Highway Service

Metric tires for mobile cranes and other specialty equipment. Maximum speed 50mph (80km/h) - speed symbol F

Size	Tire Load Limits at Various Cold Inflation Pressures							
	105	109	112	116	120	123	127	130
psi	105	109	112	116	120	123	127	130
kPa	725	750	775	800	825	850	875	900
14.00R24 (385/95R24)	11000	11400	11700	12000	12300	12800	12800	13200 (170)
14.00R25 (385/95R25)	11000	11400	11700	12000	12300	12800	12800	13200 (170)
	5000	5150	5300	5450	5600	5800	5800	6000 (170)
16.00R25 (445/95R25)	12300	12800	13200	13600	13900	14300	14300	14800 (174)
	5600	5800	6000	6150	6300	6500	6500	6700 (174)
20.5R25 (525/80R25)	16100 (177)	-	-	-	-	-	-	-
	7300 (177)	-	-	-	-	-	-	-

### MS202, MS203, MS300, MS301, MS302, MS405, MS406

Off-The-Road slow speed service - conventional/wide base ply radial tires. Maximum speed 5mph (10km/h) - speed symbol A2

Size	Rating	Tire Load Limits at Various Cold Inflation Pressures								
		65	69	73	76	80	83	87	91	94
psi		65	69	73	76	80	83	87	91	94
kPa		450	475	500	525	550	575	600	625	650
14.00R24	★	13600	13900	14300	14800	15200 (*)	-	-	-	-
		6150	6300	6500	6700	6900 (*)	-	-	-	-
15.5R25	★★	12000	12300	12800 (*)	13600	13900	14300	14800	15200	15700 (**)
		5450	5600	5800 (*)	6150	6300	6500	6700	6900	7100 (**)
17.5R25	★★	14300	14800	15700 (*)	16100	16500	17100	17600	18200	18700 (**)
		6500	6700	7100 (*)	7300	7500	7750	8000	8250	8500 (**)
20.5R25	★★	19300	19800	20900 (*)	21500	22000	22700	24000	24700	25400 (**)
		8750	9000	9500 (*)	9750	10000	10300	10900	11200	11500 (**)
23.5R25	★★	24700	25400	26800 (*)	27600	28300	29100	30000	30900	32000 (**)
		11200	11500	12150 (*)	12500	12850	13200	13600	14000	14500 (**)
26.5R25	★★	30900	32000	33100 (*)	34200	35300	36400	37500	39700	40800 (**)
		14000	14500	15000 (*)	15500	16000	16500	17000	18000	18500 (**)
29.5R25	★★	37500	38600	39700 (*)	41900	43000	44100	45400	46700	49400 (**)
		17000	17500	18000 (*)	19000	19500	20000	20600	21200	22400 (**)
29.5R29	★★	39700	40800	43000 (*)	44100	45400	46700	49400	50700	52000 (**)
		18000	18500	19500 (*)	20000	20600	21200	22400	23000	23600 (**)
35/65R33	★★	46700	49400	50700 (*)	52000	55100	56800	58400	60000	61500 (**)
		21200	22400	23000 (*)	23600	25000	25750	26500	27250	28000 (**)

Off-The-Road haulage service - conventional/wide base ply radial tires. Maximum speed 30mph (50km/h) - speed symbol B

Size	Rating	Tire Load Limits at Various Cold Inflation Pressures								
		47	51	54	58	62	65	69	73	76
psi		47	51	54	58	62	65	69	73	76
kPa		325	350	375	400	425	450	475	500	525
14.00R24	★	-	-	-	8250	8550	8800	9100 (*)	-	-
		-	-	-	3750	3875	4000	4125 (*)	-	-
15.5R25	★★	6950	7400	7850 (*)	8050	8550	8800	9350	9650	9900 (**)
		3150	3350	3550 (*)	3650	3875	4000	4250	4375	4500 (**)
17.5R25	★★	8250	8800	9100 (*)	9650	10200	10500	11000	11400	12000 (**)
		3750	4000	4125 (*)	4375	4625	4750	5000	5150	5450 (**)
20.5R25	★★	11000	11700	12300 (*)	12800	13600	14300	14800	15200	16100 (**)
		5000	5300	5600 (*)	5800	6150	6500	6700	6900	7300 (**)
23.5R25	★★	14300	14800	15700 (*)	16500	17100	18200	18700	19800	20400 (**)
		6500	6700	7100 (*)	7500	7750	8250	8500	9000	9250 (**)
26.5R25	★★	17600	18700	19800 (*)	20900	21500	22700	23400	24700	25400 (**)
		8000	8500	9000	9500	9750	10300	10600	11200	11500 (**)
29.5R25	★★	21500	22700	24000 (*)	25400	26000	27600	28300	30000	30900 (**)
		9750	10300	10900 (*)	11500	11800	12500	12850	13600	14000 (**)
29.5R29	★★	22700	24000	25400 (*)	26800	27600	29100	30000	32000	33100 (**)
		10300	10900	11500 (*)	12150	12500	13200	13600	14500	15000 (**)
35/65R33	★★	26800	28300	30000 (*)	30900	33100	34200	35300	37500	38600 (**)
		12150	12850	13600 (*)	14000	15000	15500	16000	17000	17500 (**)

Off-The-Road slow speed service - "65 series" radial ply tires. Maximum speed 5mph (10km/h) - speed symbol A2

Size	Rating	Tire Load Limits at Various Cold Inflation Pressures										
		58	62	65	69	73	76	80	83	87	91	116
psi		58	62	65	69	73	76	80	83	87	91	116
kPa		400	425	450	475	500	525	550	575	600	625	800
550/65R25	★	16500	17100	18200	18700 (*)	-	-	-	-	-	-	-
		7500	7750	8250	8500 (*)	-	-	-	-	-	-	-
650/65R25	★★	22000	23400	24000	25400 (*)	26000	27600	28300	29100	30000	30900 (**)	-
		10000	10600	10900	11500 (*)	11800	12500	15850	13200	13600	14000 (**)	-
750/65R25	★★	29100	30000	32000	33100 (*)	34200	35300	36400	37500	38600	40800 (**)	-
		13200	13600	14500	15000 (*)	15500	16000	16500	17000	17500	18500 (**)	-
775/65R29	★★	33100	34200	36400	37500 (*)	38600	40800	41900	43000	44100	45400 (**)	-
		15000	15500	16500	17000 (*)	17500	18500	19000	19500	20000	20600 (**)	-
875/65R29	★★	40800	43000	45400	46700 (*)	48100	50700	52000	53600	55100	56800 (**)	68000 (***)
		18500	19500	20600	21200 (*)	21800	23000	23600	24300	25000	25750 (**)	30750 (***)



## Load and Inflation Pressure Charts

### MS202, MS203, MS300, MS301, MS302, MS405, MS406

Off-The-Road haulage service - "65 series" radial ply tires. Maximum speed 30mph (50km/h) - speed symbol B

Size	Rating	Tire Load Limits at Various Cold Inflation Pressures							
		36	40	44	47	51	54	58	62
psi		36	40	44	47	51	54	58	62
kPa		250	275	300	325	350	375	400	425
650/65R25	★★	12000 5450	12900 5850	13900 6300	14700 (*) 6650 (*)	15800 7150	16300 7400	16950 7700	17600 (**) 8000 (**)
750/65R25	★★	15700 7100	17100 7750	18200 8250	19300 (*) 8750 (*)	20400 9250	21500 9750	22700 10000	23400 (**) 10600 (**)
775/65R29	★★	18700 8500	20400 9250	21500 9750	22700 (*) 10300 (*)	24000 10900	25400 11500	26100 11850	26800 (**) 12150 (**)
875/65R29	★★	22700 10300	24700 11200	26000 11800	27600 (*) 12500 (*)	29100 13200	30900 14000	32000 14500	34200 (**) 15500 (**)

Subterranean Haulage service. Maximum speed 25mph (40km/h) - speed symbol A8

Size	Rating	Tire Load Limits at Various Cold Inflation Pressures								
		87	91	94	98	102	105	109	112	116
psi		87	91	94	98	102	105	109	112	116
kPa		600	625	650	675	700	725	750	775	800
35/65R33	★★★★	50700 23000	52000 23600	53600 (***) 24300 (***)	55100 25000	56800 25750	58400 26500	60000 27250	61500 28000	64000 (***) 29000 (***)

### MS303

Off-The-Road haulage service - wide base ply radial tires. Maximum speed 30mph (50km/h) - speed symbol B

Size	Rating	Tire Load Limits at Various Cold Inflation Pressures								
		47	51	54	58	62	65	69	73	76
psi		47	51	54	58	62	65	69	73	76
kPa		325	350	375	400	425	450	475	500	525
33.25R29	★★	28300 12850	30000 13600	30900 (*) 14000 (*)	33100 15000	34200 15500	36400 16500	37500 17000	38600 17500	40800 (**) 18500 (**)
37.25R35	★★	36400 16500	38600 17500	40800 (*) 18500 (*)	43000 19500	45400 20600	46700 21200	49400 22400	50700 23000	52000 (**) 23600 (**)

### MS401+

Off-The-Road haulage service - Maximum speed 30mph (50km/h) - speed symbol B

Size	Rating	Tire Load Limits at Various Cold Inflation Pressures								
		58	65	73	80	83	87	102	123	
psi		58	65	73	80	83	87	102	123	
kPa		400	450	500	550	575	600	700	850	
14.00R25	★★★	8250 3750	9040 4100	9900 4500	10695 4850	11245 5100	11575 5250	12800 (***) 5800 (***)	14000 6350	

### MS401, MS402, MS403, MS440, MS453

Off-The-Road haulage service - conventional radial tires. Maximum speed 30mph (50km/h) - speed symbol B

Size	Rating	Tire Load Limits at Various Cold Inflation Pressures											
		69	73	76	80	83	87	91	94	98	102	109	116
psi		69	73	76	80	83	87	91	94	98	102	109	116
kPa		475	500	525	550	575	600	625	650	675	700	750	800
14.00R24	★★★★	9100 (*) 4125 (*)	9650 4375	9900 4500	10200 4625	10500 4750	11000 5000	11400 5150	11700 5300	12000 5450	12300 (**) 5600 (**)	12800 (***) 5800 (***)	12800 (***) 5800 (***)
14.00R25	★★★★	9100 (*) 4125 (*)	9650 4375	9900 4500	10200 4625	10500 4750	11000 5000	11400 5150	11700 5300	12000 5450	12300 (**) 5600 (**)	12800 (***) 5800 (***)	12800 (***) 5800 (***)
18.00R33	★★	17600 (*) 8000 (*)	18700 8500	19300 8750	19800 9000	20400 9250	21500 9750	22000 10000	22700 10300	23400 10600	24000 (**) 10900 (**)	-	-
21.00R33	★★	22700 (*) 10300 (*)	24000 10900	24700 11200	25400 11500	26000 11800	27600 12500	28300 12850	29100 13200	30000 13600	30900 (**) 14000 (**)	-	-
21.00R35	★★	23400 (*) 10600 (*)	24700 11200	25400 11500	26000 11800	27600 12500	28300 12850	29100 13200	30000 13600	30900 (**) 14000 (**)	32000 (**) 14500 (**)	-	-
24.00R35	★★	30000 (*) 13600 (*)	30900 14000	32000 14500	34200 15500	35300 16000	36400 16500	37500 17000	38600 17500	39700 18000	40800 (**) 18500 (**)	-	-
27.00R49	★★	44100 (*) 20000 (*)	45400 20600	48100 21800	49400 22400	50700 23000	52000 23600	55100 25000	56800 25750	58400 26500	60000 (**) 27250 (**)	-	-
33.00R51	★★	64000 (*) 29000 (*)	66000 30000	68000 30750	71500 32500	74000 33500	76000 34500	78500 35500	80500 36500	82500 37500	85500 (**) 38750 (**)	-	-
36.00R51	★★	78500 (*) 35500 (*)	80500 36500	82500 37500	85500 38750	88000 40000	91000 41250	93500 42500	96500 43750	99000 45000	102000 (**) 46250 (**)	-	-
37.00R57	★★	85500 (*) 38750 (*)	88000 40000	91000 41250	96500 43750	99000 45000	102000 46250	104500 47500	107500 48750	110000 50000	113500 (**) 51500 (**)	-	-
40.00R57	★★	99000 (*) 45000 (*)	102000 46250	107500 48750	110000 50000	113500 51500	117000 53000	120000 54500	123500 56000	128000 58000	132500 (**) 60000 (**)	-	-
46/90R57	★★	-	-	-	117000 53000	120000 54500	123500 56000	128000 58000	132500 60000	135500 61500	139000 (**) 63000 (**)	-	-
50/80R57	★★	-	-	-	120000 54500	123500 56000	128000 58000	132500 60000	135500 61500	139000 63000	143500 (**) 65000 (**)	152000 69000	161000 (**) 73000 (**)
53/80R63	★★	-	-	-	152000 69000	156500 71000	165500 75000	171000 77500	176500 80000	182000 (**) 82500 (**)	-	-	-

## Load and Inflation Pressure Charts

### MS501, MS502, MS503

Off-The-Road slow speed service - wide base ply radial tires. Maximum speed 5mph (10km/h) - speed symbol A2

Size	Rating	Tire Load Limits at Various Cold Inflation Pressures								
		65	69	73	76	80	83	87	91	94
psi		450	475	500	525	550	575	600	625	650
17.5R25	★★	14300	14800	15700 (*)	16100	16500	17100	17600	18200	18700 (**)
		6500	6700	7100 (*)	7300	7500	7750	8000	8250	8500 (**)
20.5R25	★★	19300	19800	20900 (*)	21500	22000	22700	24000	24700	25400 (**)
		8750	9000	9500 (*)	9750	10000	10300	10900	11200	11500 (**)
23.5R25	★★	24700	25400	26800 (*)	27600	28300	29100	30000	30900	32000 (**)
		11200	11500	12150 (*)	12500	12850	13200	13600	14000	14500 (**)
26.5R25	★★	30900	32000	33100 (*)	34200	35300	36400	37500	39700	40800 (**)
		14000	14500	15000 (*)	15500	16000	16500	17000	18000	18500 (**)
29.5R25	★★	37500	38600	39700 (*)	41900	43000	44100	45400	46700	49400 (**)
		17000	17500	18000 (*)	19000	19500	20000	20600	21200	22400 (**)
29.5R29	★★	39700	40800	43000 (*)	44100	45400	46700	49400	50700	52000 (**)
		18000	18500	19500 (*)	20000	20600	21200	22400	23000	23600 (**)
35/65R33	★★	46700	49400	50700 (*)	52000	55100	56800	58400	60000	61500 (**)
		21200	22400	23000 (*)	23600	25000	25750	26500	27250	28000 (**)
875/65R29	★★	45400	46700 (*)	48100	50700	52000	53600	55100	56800 (**)	-
		20600	21200 (*)	21800	23000	23600	24300	25000	25750 (**)	-

Off-The-Road slow speed service - conventional radial ply tires. Maximum speed 5mph (10km/h) - speed symbol A2

Size	Rating	Tire Load Limits at Various Cold Inflation Pressures										
		80	83	87	91	94	98	102	105	112	116	120
psi		550	575	600	625	650	675	700	725	775	800	825
18.00R25	★★	26000 (*)	26800	27600	28300	29100	30000	30900	32000	33100	34200	35300 (**)
		11800 (*)	12150	12500	12850	13200	13600	14000	14500	15000	15500	16000 (**)

### MS912, MS913 - Loader Bias

Off-The-Road haulage service -50 km/h (30mph)maximum speed wide base bias tires. Maximum speed 30mph (50km/h) - speed symbol B

Size	PR	Tire Load Limits at Various Cold Inflation Pressures									
		25	29	33	36	40	44	47	51	54	58
psi		175	200	225	250	275	300	325	350	375	400
15.5-25	12	5680 (8)	6150	6600	7150 (12)	-	-	-	-	-	-
		2575 (8)	2800	3000	3250 (12)	-	-	-	-	-	-
17.5-25	12/16/20	6950	7400	8050 (12)	8550	3100	9350 (16)	9900	10200	10700	11000 (20)
		3150	3350	3650 (12)	3875	4125	4250 (16)	4500	4625	4875	5000 (20)
20.5-25	12/16/20	9100	9900 (12)	10700	11400	12000 (16)	12800	13200 (20)	-	-	-
		4125	4500 (12)	4875	5150	5450 (16)	5800	6000 (20)	-	-	-
23.5-25	16/20/28	11700 (12)	12800	13600 (16)	14300	15200	16100 (20)	17100	17600 (24)	18300	19300 (28)
		5300 (12)	5800	6150 (16)	6500	6900	7300 (20)	7750	8000 (24)	8300	8750 (28)
26.5-25	20/24/28	14800	16100	17100	18200 (20)	19300	20400 (24)	20900 (26)	22000 (28)	-	-
		6700	7300	7750	8250 (20)	8750	9250 (24)	9500 (26)	10000 (28)	-	-

Off-The-Road slow speed service -10 km/h (5mph) maximum speed wide base bias tires. Maximum speed 5mph (10km/h) - speed symbol A2

Size	PR	Tire Load Limits at Various Cold Inflation Pressures										
		40	44	47	51	54	58	62	65	69	73	83
psi		275	300	325	350	375	400	425	450	475	500	575
15.5-25	12	9900	10500	10700 (10)	11400	11700	12300 (12)	-	-	-	-	-
		4500	4750	4875 (10)	5150	5300	5600 (12)	-	-	-	-	-
17.5-25	12/16/20	11700	12300	12800	13600 (12)	13900	14800 (14)	15200	15700	16100 (16)	16500	18200 (20)
		5300	5600	5800	6150 (12)	6300	6700 (14)	6900	7100	7300 (16)	7500	8250 (20)
20.5-25	12/16/20	15700	16500	17100	18200 (16)	18700	19300	20400	20900 (20)	-	-	-
		7100	7500	7750	8250 (16)	8500	8750	9250	9500 (20)	-	-	-
23.5-25	16/20/28	19800	20900 (16)	22000	23400	24000 (20)	24700	26000	26800	27600 (24)	28200	30000 (28)
		9000	9500 (16)	10000	10600	10900 (20)	11200	11800	12150	12500 (24)	12800	13600 (28)
26.5-25	20/24/28	25400	26800	27600	29100 (20)	30000	30900 (24)	32000	33100 (26)	34200 (28)	-	-
		11500	12150	12500	13200 (20)	13600	14000 (24)	14500	15000 (26)	15500(28)	-	-



## Load and Inflation Pressure Charts

### MS900

Backhoe - Industrial Service. Maximum speed 25mph (40km/h) - speed symbol A8

Size	PR	Tire Load Limits at Various Cold Inflation Pressures										
		24	28	32	36	40	44	48	52	56	60	64
psi		165	190	220	250	275	300	330	360	385	415	440
kPa		11390	13170	15170 (6)	17170	19180	2090 (8)	2200	2340 (10)	-	-	-
11L-15SL	10	360	710	775 (6)	850	900	950 (8)	1000	1060 (10)	-	-	-
11L-16SL	12	1480	1650	1760	1930	2090	2200 (8)	2340	24710 (10)	2540	2680	2760 (12)
		670	750	800	875	950	1000 (8)	1060	1120 (10)	1150	1215	1250 (12)
14.5/75-16.1SL	10	2270	2540	2760	3000	3200 (10)	-	-	-	-	-	-
		1030	1150	1250	1360	1450 (10)	-	-	-	-	-	-

### MS901

Backhoe - Industrial Service. Reference speed 25 mph (40 km/h) - speed symbol A8

Size	PR	Tire Load Limits at Various Cold Inflation Pressures									
		40	45	50	54	58	60	62	68	72	
psi		275	310	345	370	400	415	430	470	490	
kPa		5050	5360 (10)	5680	5900	6000 (12)	6275	6400 (14)	6760	6950 (16)	
12.5/80-18 (340/80-18)	12/16	2290	2430 (10)	2575	2675	2725 (12)	2845	2900 (14)	3065	3150 (16)	

Size	PR	Tire Load Limits at Various Cold Inflation Pressures										
		18	20	22	24	26	28	30	32	36	38	42
psi		125	140	150	170	180	190	210	220	250	260	290
kPa		3520	3740	4080	4300 (6)	4540	4800	5080 (8)	5200	-	-	6400 (12)
14.9-24	12	1600	1700	1850	1950 (6)	2060	2180	2300 (8)	2360	-	-	2900 (12)
16.9-24	12	-	4680	4940 (6)	5200	5520	5840 (8)	6150	6400 (10)	6950	7150 (12)	-
		-	2120	2240 (6)	2360	2500	2650 (8)	2800	2900 (10)	3150	3250 (12)	-
18.4-28	12	-	5840 (6)	6400	6800 (8)	7150	7400	7850 (10)	8250	9100 (12)	-	-
		-	2650 (6)	2900	3075 (8)	3250	3350	3550 (10)	3750	4125 (12)	-	-

### MS902

Backhoe - Industrial Service. Maximum speed 25mph (40km/h) - speed symbol A8

Size	PR	Tire Load Limits at Various Cold Inflation Pressures									
		36	40	44	48	52	54	58	60	62	
psi		250	275	310	330	360	370	400	415	430	
kPa		-	5050	5360 (10)	5540	5780	5900	6000 (12)	6270	6400 (14)	
12.5/80-18 (340/80-18)	12/14	-	2290	2430 (10)	2500	2620	2675	2725 (12)	2845	2900 (14)	
15.5/80-24 (400/80-24)	12/14/16	7400 (10)	7790	8250 (12)	8575	8800 (14)	9160	9650 (16)	-	-	
		3350 (10)	3530	3750 (10)	3890	4000 (14)	4155	4375 (16)	-	-	

Size	PR	Free Rolling				Drive Wheel			
		33	40	48	55	33	40	48	55
psi		230	275	330	380	230	275	330	380
kPa		-	10500 (12)	11400 (14)	12300 (16)	-	7400 (12)	8050 (14)	8800 (16)
16.5/85-24	12/14/16	-	4750 (12)	5150 (14)	5600 (16)	-	3350 (12)	3650 (14)	4000 (16)
16.5/85-28	10	8800 (10)	9650 (12)	-	-	6150 (10)	6800 (12)	-	-
		4000 (10)	4375 (12)	-	-	2800 (10)	3075 (12)	-	-

### MS903

Reference speed 25 mph (40 km/h) - speed symbol A8

Size	PR	Tire Load Limits at Various Cold Inflation Pressures								
		23	26	29	32	35	38	42	44/45	
psi		160	180	200	220	250	260	290	300/310	
kPa		-	7710	8040 (10)	8370	8800 (12)	9180	9930	10500 (16)	
18.4-26 (480/80-26)	12/16	-	3500	3650 (10)	3795	4000 (12)	4160	4500	4750 (16)	
16.9-28 (440/80-28)	12/14	6200	6400 (8)	6600	6800 (10)	7325	7850 (12)	8130	8550 (14)	
		2810	2900 (8)	3000	3075 (10)	3320	3550 (12)	3690	3785 (14)	
16.9-30 (420/85-30)	12/14	-	-	6715	7160 (10)	7605	8050 (12)	8550	8800 (14)	
		-	-	3045	3200 (10)	3450	3650 (12)	3880	4000 (14)	
18.4-30 (460/85-30)	12/14	-	8375	8700 (10)	9025	9350 (12)	9585	9900 (14)	-	
		-	3800	3950 (10)	4090	4250 (12)	4350	4500 (14)	-	

## Load and Inflation Pressure Charts

### MS904

Backhoe - Industrial Service. Reference speed 25 mph (40 km/h) - speed symbol A8

Size	PR	Tire Load Limits at Various Cold Inflation Pressures										
		20	22	24	26	28	30	32	34	38	42	46
psi		140	150	170	180	190	210	220	230	260	290	320
kPa												
17.5L-24 (460/70-24)	10/12/16	4400 (6)	4680	5080	5360 (8)	5520	5840	6150 (10)	6480	7150 (12)	7975	8800 (16)
		2000 (6)	2120	2300	2430 (8)	2500	2650	2800 (10)	2940	3250 (12)	3615	4000 (16)
19.5L-24 (500/70-24)	12/16	5200	5680	6000 (8)	6400	6600 (10)	6950	7400	7600 (12)	8350	9100 (16)	-
		2360	2575	2725 (8)	2900	3000 (10)	3150	3350	3450 (12)	3790	4125 (16)	-
21L-24	12	6150	6600	6950	7400 (10)	7850	8050	8550 (12)	-	-	-	-
		2800	3000	3150	3350 (10)	3550	3650	3875 (12)	-	-	-	-

### MS905, MS915

Off-the-road grader service - 25 mph (40 km/h) maximum speed A8, conventional (bias) tires

Size	PR	Tire Load Limits at Various Cold Inflation Pressures										
		18	22	25	29	33	36	40	44	47	51	58
psi		125	150	175	200	225	250	275	300	325	350	400
kPa												
13.00-24	12/14/16	3740	4180	4540 (8)	4940	5200 (10)	5520	5840	6000 (12)	6400	6600 (14)	7150 (16)
		1700	1900	2060 (8)	2240	2360 (10)	2500	2650	2725 (12)	2900	3000 (14)	3250 (16)
14.00-24	12/16	4540	5080	5520	5840	6150 (10)	6800 (12)	7150	7600	7850	8050 (16)	-
		2060	2300	2500	2650	2800 (10)	3075 (12)	3250	3450	3550	3650 (16)	-

### MS906, MS916 – Skid Steer

Diagonal (bias) tires used in construction equipment service. Reference speed 5 mph (10 km/h) - speed symbol A2

Size	PR	Tire Load Limits at Various Cold Inflation Pressures												
		30	35	40	45	50	55	60	65	70	75	80	85	100
psi		120	140	160	180	200	220	240	260	280	300	320	340	360
kPa														
5.70-12	4	965	1060	1140	1120	1300	1380	1450 (4)	-	-	-	-	-	-
		440	480	515	555	590	625	660 (4)	-	-	-	-	-	-
23x8.50-12	6/8/12	1340	1470 (4)	1590	1700	1810 (6)	1930	2040	-	2400	-	-	-	-
		610	665 (4)	720	770	820 (6)	875	925	-	1090	-	-	-	-
27x8.50-15	8	1930 (4)	2090	2260	2480 (6)	2600	2780	2910 (8)	-	-	-	-	-	-
		875 (4)	950	1025	1125 (6)	1180	1260	1320 (8)	-	-	-	-	-	-
27x10-12	14	-	-	-	-	-	-	-	-	-	6200	6330	7165 (12)	7800 (14)
		-	-	-	-	-	-	-	-	-	2815	2870	3250 (12)	3540 (14)
7.00-15	6/8	2120	2320	2510 (4)	2690	2860	3030	3180 (6)	3420	3640 (8)	-	-	-	-
		960	1050	1140 (4)	1220	1295	1375	1440 (6)	1550	1650 (8)	-	-	-	-
31x15.50-15	8	3400 (6)	3700	4015	4400 (8)	-	-	-	-	-	-	-	-	-
		1540 (6)	1680	1820	1995 (8)	-	-	-	-	-	-	-	-	-
10-16.5	10	2760 (4)	3020	3260	3500 (6)	3720	3930	4140 (8)	4340	4540	4710 (10)	-	-	-
		1250 (4)	1370	1480	1590 (6)	1685	1785	1880 (8)	1970	2060	2135 (10)	-	-	-
12-16.5	12	3560	3900	4220 (6)	4520	4810 (8)	5080	5340	5600 (10)	5840	6150	6320 (12)	-	-
		1615	1770	1915 (6)	2050	2180 (8)	2305	2420	2540 (10)	2650	2800	2865 (12)	-	-
14-17.5	14	4820 (6)	5260	5700 (8)	6100	6500	6850 (10)	7220	7650 (12)	8050	8250	8540 (14)	-	-
		2185 (6)	2385	2585 (8)	2765	2950	3105 (10)	3275	3430 (12)	3650	3750	3875 (14)	-	-
15-19.5	14/16	6130	6710	7250 (8)	7770	8260	8740	9190 (12)	9630	10060 (14)	10500	10880 (16)	-	-
		2780	3045	3290 (8)	3525	3745	3965	4170 (12)	4370	4565 (14)	4750	4935 (16)	-	-

### MS907 - L5 Skid Steer & Backhoe

Diagonal (bias) tires used in construction equipment service

Size	PR	Tire Load Limits at Various Cold Inflation Pressures										
		35	40	45	50	55	60	65	75	80	90	105
psi		240	280	310	340	380	410	450	520	550	620	725
kPa												
23x8.50-12	8	1470 (4)	1590	1700	1810 (6)	1930	2040	2150 (8)	-	-	-	-
		665 (4)	720	770	820 (6)	875	925	975 (8)	-	-	-	-
27x8.50-15	10	2090	2260	2480 (6)	2600	2780	2910 (8)	3040	3300 (10)	-	-	-
		950	1025	1125 (6)	1180	1260	1320 (8)	1380	1500 (10)	-	-	-
10-16.5	14	3020	3260	3500 (6)	3720	3930	4140 (8)	4340	4710 (10)	4940	5240 (12)	5680 (14)
		1370	1480	1590 (6)	1685	1785	1880 (8)	1970	2135 (10)	2240	2375 (12)	2575 (14)
12-16.5	14	3900	4220 (6)	4520	4810 (8)	5080	5340	5600 (10)	5840	6320 (12)	6780 (14)	-
		1770	1915 (6)	2050	2180 (8)	2305	2420	2540 (10)	2650	2865 (12)	3075 (14)	-
14-17.5	16	5260	5700 (8)	6100	6500	6850 (10)	7220	7650 (12)	8050	8540 (14)	9100 (16)	-
		2385	2585 (8)	2765	2950	3105 (10)	3275	3430 (12)	3650	3875 (14)	4125 (16)	-

Reference speed 25 mph (40 km/h) - speed symbol A8

Size	PR	Tire Load Limits at Various Cold Inflation Pressures										
		28	30	32	36	38	40	45	48	58	62	72
psi		190	210	220	250	260	330	330	330	400	430	490
kPa												
12.5/80-18	14/16	-	-	-	-	-	5050	5360 (10)	5680	6000 (12)	6400 (14)	6950 (16)
		-	-	-	-	-	2290	2430 (10)	2575	2725 (12)	2900 (14)	3150 (16)
16.9-28	14	6150 (8)	6600	6800 (10)	7400	7850 (12)	7990	8340	8550 (14)	-	-	-
		2800 (8)	3000	3075 (10)	3350	3550 (12)	3625	3780	3875 (14)	-	-	-



## Load and Inflation Pressure Charts

### MS908 - Wheeled Excavator

Reference speed 30 mph (50 km/h) - speed symbol B

Size	PR	Tire Load Limits at Various Cold Inflation Pressures					
		70	75	85	90	97	105
psi							
kPa		480	520	590	620	670	725
8.25-20	14	-	-	4580	4670 (12)	4800	4940 (14)
		-	-	2080	2120 (12)	2180	2240 (14)
9.00-20	14	-	-	4680	4940 (10)	5360	5520 (14)
		-	-	2120	2240 (10)	2430	2500 (14)
10.00-20	16	5440	5680 (12)	6150	6400 (14)	6600	6950 (16)
		2470	2575 (12)	2800	2900 (14)	3000	3150 (16)
11.00-20	16	-	-	-	6150	6855	7400 (16)
		-	-	-	2800	3110	3350 (16)

### MS909 - Multipurpose

Reference speed 30 mph (50 km/h) - speed symbol B

Size	PR	Tire Load Limits at Various Cold Inflation Pressures										
		36	40	44	48	51	55	58	64	72	85	100
psi												
kPa		250	280	300	350	350	380	400				
405/70-20 (16/70-20)	12/14/16	5680 (10)	6090	6400 (12)	6795	7150 (14)	7500	7850 (16)	-	-	-	-
		2575 (10)	2760	2900 (12)	3080	3250 (14)	3400	3550 (16)	-	-	-	-
405/70-24 (16/70-24)	14/16	-	-	-	7000	7375	7650	7850 (14)	8250	8800 (16)	-	-
		-	-	-	3170	3345	3470	3550 (14)	3750	4000 (16)	-	-
445/65-19.5 (18-19.5)	16/18	-	-	-	-	-	-	-	8360	8950	9900 (16)	11000 (18)
		-	-	-	-	-	-	-	3790	4060	4500 (16)	5000 (18)
445/65-22.5 (18-22.5)	16/18	-	-	-	-	-	-	-	8880	9570	10700 (16)	12000 (18)
		-	-	-	-	-	-	-	4030	4340	4875 (16)	5450 (18)

### MS922 - Paver bias E-7

Maximum speed 5mph (10km/h) - speed symbol A2

Size	PR	Tire Load Limits at Various Cold Inflation Pressures							
		54	58	63	69	73	78	80	83
psi									
kPa		375	400	435	475	500	525	550	575
14.00-20	12/14	11560	12000 (12)	12500	13200 (14)	-	-	-	-
		5240	5450 (12)	5670	6000 (14)	-	-	-	-
18.00-25	16/20	21720	22700 (16)	23930	25400 (20)	-	-	-	-
		9850	10300 (16)	10850	11500 (20)	-	-	-	-
21.00-25	28	-	-	-	-	33100 (24)	34200	35300	36400 (28)
		-	-	-	-	15000 (24)	15500	16000	16500 (28)

### MS938 - Compactor bias R-3

Maximum speed 25mph (40km/h) - speed symbol A8

Size	PR	COLD INFL. PRESS.	MAXIMUM CYCLIC LOAD		ROAD TRANSPORT
			psi	lbs	lbs
		kPa	kg	kg	kg
23.1-26	12	32	13400	12200	8550
		220	6100	5520	3875
28L-26	16	36	17000	15500	10500
		250	7710	7010	4750

# Load and Inflation Pressure Charts

## MS801

Diagonal (bias) ply-industrial tires operated only on smooth floors and runways

Size	PR	Infl. Press	Counterbalanced Lift Trucks				Industrial Vehicles (Continuous Service)				Load Index
			Load Wheel		Steer Wheel						
			psi	15mph	22mph	15mph	22mph	5 mph	15 mph	25 mph	
kPa	25kph	35kph	25kph	35kph	10 kph	25 kph	40 kph	50 kph			
18x7-8	14	130	4160	4000	3200	2960	4160	3200	2850	2690	121A5
		900	1885	1815	1450	1340	1885	1450	1290	1220	
	16	145	4730	4550	3640	3365	4730	3640	3240	3060	125A5
		1000	2145	2065	1650	1525	2145	1650	1470	1385	
5.00-8	10	145	3120	3000	2400	2220	3120	2400	2135	2015	111A5
		1000	1415	1365	1090	1010	1415	1090	970	915	
6.00-9	10	125	3785	3640	2910	2690	3785	2910	2590	2445	118A5
		850	1715	1650	1320	1220	1715	1320	1175	1110	
	12	145	4160	4000	3200	2960	4160	3200	2850	2690	121A5
		1000	1885	1815	1450	1340	1885	1450	1290	1220	
23x9-10	18	130	6970	6700	5360	4960	6970	5360	4770	4500	139A5
		900	3160	3040	2430	2250	3160	2430	2165	2040	
	20	145	7590	7300	5840	5400	7590	5840	5200	4905	142A5
		1000	3445	3315	2650	2450	3445	2650	2360	2225	
6.50-10	10	115	4290	4125	3300	3055	4290	3300	2935	2770	122A5
		790	1950	1875	1500	1390	1950	1500	1335	1260	
	12	140	4730	4550	3640	3365	4730	3640	3240	3060	125A5
		970	2145	2065	1650	1525	2145	1650	1470	1385	
23x10-12	16	115	6970	6700	5360	4960	6970	5360	4770	4500	139A5
		790	3160	3040	2430	2250	3160	2430	2165	2040	
	20	145	8320	8000	6400	5920	8320	6400	5695	5375	145A5
		1000	3770	3625	2900	2685	3770	2900	2580	2435	
7.00-12	12	125	5900	5675	4540	4200	5900	4540	4040	3815	133A5
		860	2680	2575	2060	1905	2680	2060	1835	1730	
	14	145	6085	5850	4680	4330	6085	4680	4165	3930	134A5
		1000	2755	2650	2120	1960	2755	2120	1885	1780	
27x10-12	16	115	8580	8250	6600	6105	8580	6600	5875	5545	146A5
		790	3900	3750	3000	2775	3900	3000	2670	2520	
	18	130	9295	8940	7150	6615	9295	7150	6365	6005	149A5
		900	4225	4065	3250	3005	4225	3250	2895	2730	
	20	145	10205	9815	7850	7260	10205	7850	6985	6595	152A5
		1000	4615	4440	3550	3285	4615	3550	3160	2980	
8.15-15 (28x9-15)	14	140	8580	8250	6600	6105	8580	6600	5875	5545	146A5
		970	3900	3750	3000	2775	3900	3000	2670	2520	
250-15	18	138	10465	10065	8050	7445	10465	8050	7165	6760	153A5
		950	4745	4565	3650	3375	4745	3650	3250	3065	
	20	145	11115	10690	8550	7910	11115	8550	7610	7180	155A5
		1000	5040	4845	3875	3585	5040	3875	3450	3255	
7.00-15	14	135	7385	7100	5680	5255	7385	5680	5055	4770	141A5
		930	3350	3220	2575	2380	3350	2575	2290	2165	
7.50-15	14	135	7995	7690	6150	5690	7995	6150	5475	5165	144A5
		930	3640	3500	2800	2590	3640	2800	2490	2350	
8.25-15	14	120	9295	8940	7150	6615	9295	7150	6365	6005	149A5
		830	4225	4065	3250	3005	4225	3250	2895	2730	
300-15	20	135	14300	13750	11000	10175	14300	11000	9790	9240	164A5
		930	6500	6250	5000	4625	6500	5000	4450	4200	
	22	145	14820	14250	11400	10545	14820	11400	10145	9575	165A5
		1000	6695	6440	5150	4765	6695	5150	4585	4325	
9.00-20	12	130	12870	12375	9900	9160	12870	9900	8810	8315	160A5
		900	5850	5625	4500	4165	5850	4500	4005	3780	
10.00-20	16	130	14300	13750	11000	10175	14300	11000	9790	9240	164A5
		900	6500	6250	5000	4625	6500	5000	4450	4200	
11.00-20	18	145	17160	16500	13200	12210	17160	13200	11750	11090	170A5
		1000	7800	7500	6000	5550	7800	6000	5340	5040	
12.00-20	24	145	20410	19625	15700	14525	20410	15700	13975	13190	176A5
		1000	9230	8875	7100	6570	9230	7100	6320	5965	
	28	150	20930	20125	16100	14895	20930	16100	14330	13525	177A5
		1030	9490	9125	7300	6755	9490	7300	6495	6130	
12.00-24	20	145	21450	20625	16500	15265	21450	16500	-	-	178A5
		1000	9750	9375	7500	6940	9750	7500	-	-	
14.00-24	28	145	28600	27500	22000	20350	28600	22000	-	-	188A5
		1000	13000	12500	10000	9250	13000	10000	-	-	



## Load and Inflation Pressure Charts

### MS802 - Ground Support Equipment

Diagonal (bias) ply-industrial tires operated only on smooth floors and runways

Size	PR	Infl. Press	Counterbalanced Lift Trucks				Industrial Vehicles (Continuous Service)				Load Index
			Load Wheel		Steer Wheel						
			15mph	22mph	15mph	22mph	5 mph	15 mph	25 mph	30 mph	
		psi	25kph	35kph	25kph	35kph	10 kph	25 kph	40 kph	50 kph	Industrial Service
18x7-8	16	145	4730	4550	3640	3365	4730	3640	3240	3060	125A5
		1000	2145	2065	1650	1525	2145	1650	1470	1385	
6.00-9 (6.90-9)	10	125	3785	3640	2910	2690	3785	2910	2590	2445	118A5
		850	1715	1650	1320	1220	1715	1320	1175	1110	
	12	145	4160	4000	3200	2960	4160	3200	2850	2690	121A5
		1000	1885	1815	1450	1340	1885	1450	1290	1220	
6.50-10	14	145	4730	4550	3640	3365	4730	3640	3240	3060	125A5
		1000	2145	2065	1650	1525	2145	1650	1470	1385	
23x9-10	20	145	7590	7300	5840	5400	7590	5840	5200	4905	142A5
		1000	3445	3315	2650	2450	3445	2650	2360	2225	
7.00-12	16	145	6420	6175	4940	4570	6420	4940	4395	4150	136A5
		1000	2910	2800	2240	2070	2910	2240	1995	1880	
165-13	8	65	-	-	-	-	2290	1760	1565	1480	100A5
		450	-	-	-	-	1040	800	710	670	
7.00-15	14	135	7385	7100	5680	5255	7385	5680	5055	4770	141A5
		930	3350	3220	2575	2380	3350	2575	2290	2165	
7.50-15	16	145	8580	8250	6600	6105	8580	6600	5875	5545	146A5
		1000	3900	3750	3000	2775	3900	3000	2670	2520	
8.25-15	14	115	9295	8940	7150	6615	9295	7150	6365	6005	149A5
		790	4225	4065	3250	3005	4225	3250	2895	2730	
8.00-16.5	8	65	-	-	-	-	4860	3740	3330	3140	126A5
		450	-	-	-	-	2210	1700	1515	1430	
8.75-16.5	10	75	-	-	-	-	6240	4800	4270	4030	135A5
		520	-	-	-	-	2835	2180	1940	1830	
		95	-	-	-	-	7175	5520	4915	4635	
		650	-	-	-	-	3250	2500	2225	2100	

### MS307/MS407

Maximum speed 15mph (25km/h) - speed symbol A5

Size	Rating	Tire Load Limits at Various Cold Inflation Pressures (lbs/kg)										Load Index
		Load Wheel					Steer Wheel					
		87	102	116	131	145	87	102	116	131	145	
psi												
kPa		600	700	800	900	1000	600	700	800	900	1000	
10.00R20	-	10890	11930	12980	14080	15190	8380	9170	9990	10820	11700	166A5
		4940	5410	5890	6385	6890	3800	4160	4530	4910	5300	
12.00R20	★★★	14615	15920	17480	18915	20350	11240	12235	13450	14550	15700	176A5
		6630	7220	7930	8580	9230	5100	5550	6100	6600	7100	
12.00R24	★★★	14615	16335	18055	19775	21495	11245	12570	13890	15200	16500	178A5
		6630	7410	8190	8970	9750	5100	5700	6300	6900	7500	
14.00R24/25	★★★	23790	26170	28660	30950	32960	18300	20130	22000	23810	25400	193A5
		10790	11870	13000	14040	14950	8300	9130	10000	10800	11500	
18.00R25	★★★	35120	38560	42280	46140	50155	27000	29650	32520	35495	38600	207A5
		15930	17490	19180	20930	22750	12250	13450	14750	16100	17500	

Size	Rating	Cold Inflation Pressure	Counterbalanced Lift Trucks						Industrial Cyclic			Load Index
			Load Wheel			Steer Wheel						
			15mph	22mph	15mph	22mph	Static	15 mph	22 mph			
			psi	25kph	35kph	25kph	35kph	Static	25 kph	35 kph	Industrial Service	
10.00R20	-	145	15190	14620	11700	10820	17660	11700	10820	166A5		
		1000	6890	6630	5300	4910	8010	5300	4910			
12.00R20	★★★	145	20350	19580	15700	14525	23660	15700	14525	176A5		
		1000	9230	8880	7100	6570	10730	7100	6570			
12.00R24	★★★	145	21495	20680	16500	15300	24980	16500	15300	178A5		
		1000	9750	9380	7500	6940	11330	7500	6940			
14.00R24/25	★★★	145	32960	-	25400	-	38300	25400	-	193A5		
		1000	14950	-	11500	-	17370	11500	-			
18.00R25	★★★	145	50160	-	38600	-	-	38600	-	207A5		
		1000	22750	-	17500	-	-	17500	-			

## Load and Inflation Pressure Charts

### MS803/MS804

Diagonal (bias) ply-industrial tires operated only on smooth floors and runways

Size	PR	Infl. Press	Counterbalanced Lift Trucks				Industrial Vehicles (Continuous Service)			Load Index
			Load Wheel		Steer Wheel		5 mph	15 mph	22 mph	
			15mph	22mph	15mph	22mph				
		psi	25kph	35kph	25kph	35kph	10 kph	25 kph	35 kph	Industrial Service
		kPa								
12.00-20	20	145 1000	20410 9230	19625 8875	15700 7100	14525 6570	20410 9230	15700 7100	14525 6570	176A5
14.00-24	28	145 1000	28600 13000	27500 12500	22000 10000	20350 9250	28600 13000	22000 10000	20350 9250	188A5
16.00-25	32	145 1000	35880 16250	34500 15625	27600 12500	25530 11565	35880 16250	27600 12500	25530 11565	196A5
18.00-25	40	145 1000	50180 22750	48250 21875	38600 17500	35705 16190	50180 22750	38600 17500	35705 16190	207A5
18.00-33	40	145 1000	60710 27560	58375 26500	46700 21200	43200 19610	60710 27560	46700 21200	43200 19610	214A5

### MS930, MS931, LOGXTRA - Forestry Bias LS-2

Logging or forestry service other than on cable or grapple skidders tires used as singles. Maximum speed 20mph (30km/h) - speed symbol A6

Size	PR	Tire Load Limits at Various Cold Inflation Pressures							
		20	25	30	35	40	50		
		psi	kPa	psi	kPa	psi	kPa	psi	kPa
		14	170	210	240	275	340		
23.1-26	16	7150 (10) 3250 (10)	8250 3750	9100 (14) 4125 (14)	9900 (16) 4500 (16)	- -	- -		
28L-26	16/20/26	8250 (12) 3750 (12)	9350 (14) 4250 (12)	10500 (16) 4750 (16)	11400 (20) 5150 (20)	12430 5640	14300 (26) 6500 (26)		
24.5-32	20	8800 4000	9900 (12) 4500 (12)	11000 (16) 5000 (16)	12000 (18) 5450 (18)	12800 (20) 5800 (20)	- -		
30.5L-32	20/26/32	10500 (12) 4750 (12)	11700 (16) 5300 (16)	13200 (20) 6000 (20)	14300 6500	15700 (26) 7100 (26)	17600 (32) 8000 (32)		
35.5L-32	20/26/30	13900 (16) 6300 (16)	16100 (20) 7300 (20)	17600 8000	19300 (26) 8750 (26)	20900 (30) 9500 (30)	- -		

Cable or grapple skidder tires used as singles. Maximum speed 5mph (10km/h) - speed symbol A2

Size	PR	Tire Load Limits at Various Cold Inflation Pressures							
		25	30	35	40	45	55		
		psi	kPa	psi	kPa	psi	kPa	psi	kPa
		170	210	240	275	310	380		
23.1-26	16	10000 (10) 4540 (10)	11600 5260	12700 (14) 5760 (14)	13900 (16) 6300 (16)	- -	- -		
28L-26	16/20/26	11600 (12) 5260 (12)	13100 (14) 5940 (14)	14700 (16) 6650 (16)	16000 (20) 7300 (20)	17600 8000	20400 (26) 9250 (26)		
24.5-32	20	12300 5580	13900 (12) 6300 (12)	15400 (16) 7000 (16)	16800 (18) 7600 (18)	18200 (20) 8250 (20)	- -		
30.5L-32	20/26/32	14700 (12) 6650 (12)	16400 (16) 7450 (16)	18500 (20) 8400 (20)	20000 9000	22000 (26) 10000 (26)	24700 (32) 11200 (32)		
35.5L-32	20/26/30	19500 (16) 8850 (16)	22500 (20) 10200 (20)	24600 11200	27000 (26) 12150 (26)	29100 (30) 13200 (30)	- -		

### MS933

High flotation tires used in agricultural, logging and off-the-road surface. Maximum speed 30mph (50km/h) - speed symbol B

Size	PR	Tire Load Limits at Various Cold Inflation Pressures								
		15	20	25	30	35	40	45	50	55
		psi	kPa	psi	kPa	psi	kPa	psi	kPa	psi
		100	140	170	210	240	280	310	345	380
66x43.00-25	20	7400 (6) 3350 (6)	8800 (8) 4000 (8)	9900 (10) 4500 (10)	11000 (12) 5000 (12)	12300 (14) 5600 (14)	13200 (16) 6000 (16)	13900 6300	14800 (20) 6700 (20)	- -
66x43.00-26	20	7400 (6) 3350 (6)	8800 (8) 4000 (8)	9900 (10) 4500 (10)	11000 (12) 5000 (12)	12000 (14) 5450 (14)	13200 (16) 6000 (16)	13900 6300	14800 (20) 6700 (20)	- -
67x34.00-25	20	7400 3350	8800 (6) 4000 (6)	10200 (8) 4625 (8)	11400 (10) 5150 (10)	12300 (12) 5600 (12)	13200 (14) 6000 (14)	14070 6380	15080 6840	16100 (20) 7300 (20)
67x34.00-26	20	7400 3350	8800 (6) 4000 (6)	10200 (8) 4625 (8)	11400 (10) 5150 (10)	12300 (12) 5600 (12)	13200 (14) 6000 (14)	14070 6380	15080 6840	15700 (20) 7100 (20)
73x44.00-32	20	8550 3875	10200 4625	11700 5300	12800 (12) 5800 (12)	14300 6500	15200 (16) 6900 (16)	16500 7500	17600 (20) 8000 (20)	- -
73x50.00-32	20	8800 4000	10500 4750	12000 5450	13200 6000	14800 (16) 6700 (16)	15700 7100	17100 (20) 7750 (20)	- -	



## Load and Inflation Pressure Charts

### MS910R

Construction application

Size		Service Speed	Tire Load Limits at Various Cold Inflation Pressures								
psi			30	33	36	40	44	47	51	54	
kPa			200	225	250	275	300	325	350	375	
335/80R18	L	5mph	-	4740	5050	5340	5620	5890	6150	6400	
		10kph	-	2150	2290	2420	2550	2670	2790	2900	
		30mph	3240	3460	3680	3900	4100	4300	4500	4680	
	E	50kph	1470	1570	1670	1770	1860	1950	2040	2120	
		L	5mph	-	4920	5230	5510	5800	6090	6350	6000
			10kph	-	2230	2370	2500	2630	2760	2880	3000
365/70R18	E	30mph	3330	3570	3790	4010	4210	4410	4610	4800	
		50kph	1510	1620	1720	1820	1910	2000	2090	2180	
	405/70R18	L	5mph	-	5980	6350	6700	7060	7410	7740	8050
10kph			-	2710	2880	3040	3200	3360	3510	3650	
E		30mph	3920	4210	4480	4740	4980	5230	5450	5680	
	50kph	1780	1910	2030	2150	2260	2370	2470	2575		
335/80R20	L	5mph	-	5030	5360	5640	5950	6240	6500	6800	
		10kph	-	2280	2430	2560	2700	2830	2950	3075	
		30mph	3420	3660	3900	4120	4340	4540	4740	4940	
	E	50kph	1550	1660	1770	1870	1970	2060	2150	2240	
		L	5mph	-	5980	6350	6700	7060	7410	7740	8050
			10kph	-	2710	2880	3040	3200	3360	3510	3650
365/80R20	E	30mph	3920	4210	4480	4740	4980	5230	5450	5680	
		50kph	1780	1910	2030	2150	2260	2370	2470	2575	
	405/70R20	L	5mph	-	6330	6750	7120	7500	7850	8200	8550
10kph			-	2870	3060	3230	3400	3560	3720	3875	
E		30mph	4170	4450	4740	5000	5270	5530	5780	6000	
	50kph	1890	2020	2150	2270	2390	2510	2620	2725		
405/70R24	L	5mph	-	6950	7390	7800	8220	8620	9000	9350	
		10kph	-	3150	3350	3540	3730	3910	4080	4250	
		30mph	4590	4920	5230	5510	5800	6090	6350	6600	
	E	50kph	2080	2230	2370	2500	2630	2760	2880	3000	
		L	5mph	-	8420	8950	9480	9970	10450	10910	11400
			10kph	-	3820	4060	4300	4520	4740	4950	5150
455/70R24	E	30mph	5730	6130	6530	6900	7250	7610	7940	8250	
		50kph	2600	2780	2960	3130	3290	3450	3600	3750	

Multipurpose radial

Size		Service Speed	Tire Load Limits at Various Cold Inflation Pressures								
psi			36	44	51	54	65	73	80	87	94
kPa			250	300	350	375	450	500	550	600	650
335/80R18	MPT	70mph	3320	3840	4400	-	-	-	-	-	-
		110kph	1500	1740	2000	-	-	-	-	-	-
365/70R18	MPT	70mph	3280	3790	4200	4540	-	-	-	-	-
		110kph	1490	1720	1900	2060	-	-	-	-	-
385/55R18	MPT	70mph	3380	3850	4270	4790	5200	-	-	-	-
		110kph	1530	1750	1940	2170	2360	-	-	-	-
335/80R20	MPT	70mph	3480	3970	4400	4940	5360	5820	6260	6720	7150
		110kph	1580	1800	2000	2240	2430	2640	2840	3050	3250
365/80R20	MPT	70mph	3810	4400	5050	5690	5220	6550	7080	7580	7850
		110kph	1730	2000	2290	2580	2730	2970	3210	3440	3550
405/70R20	MPT	70mph	3770	4360	4940	5640	6220	6770	7300	7850	-
		110kph	1710	1980	2240	2560	2820	3070	3310	3550	-
405/70R24	MPT	70mph	4560	5270	5970	6530	7320	7850	-	-	-
		110kph	2070	2390	2710	2960	3320	3550	-	-	-
455/70R24	MPT	70mph	5690	6570	7430	8250	-	-	-	-	-
		110kph	2580	2980	3370	3750	-	-	-	-	-

## INTERNATIONAL LOAD INDEX & SPEED SYMBOLS

Load Index Numbers		
LI	KG	LBS
90	600	1320
91	615	1360
92	630	1390
93	650	1430
94	670	1480
95	690	1520
96	710	1570
97	730	1610
98	750	1650
99	775	1710
100	800	1760
101	825	1820
102	850	1870
103	875	1930
104	900	1980
105	925	2040
106	950	2090
107	975	2150
108	1000	2200
109	1030	2270
110	1060	2340
111	1090	2400
112	1120	2470
113	1150	2540
114	1180	2600
115	1215	2680
116	1250	2760
117	1285	2830
118	1320	2910
119	1360	3000
120	1400	3080
121	1450	3200
122	1500	3300
123	1550	3420
124	1600	3520
125	1650	3640
126	1700	3740
127	1750	3860
128	1800	3960
129	1850	4080
130	1900	4180
131	1950	4300
132	2000	4400
133	2060	4540
134	2120	4680

Load Index Numbers		
LI	KG	LBS
135	2180	4800
136	2240	4940
137	2300	5080
138	2360	5200
139	2430	5360
140	2500	5520
141	2575	5680
142	2650	5840
143	2725	6000
144	2800	6150
145	2900	6400
146	3000	6600
147	3075	6800
148	3150	6950
149	3250	7150
150	3350	7400
151	3450	7600
152	3550	7850
153	3650	8050
154	3750	8250
155	3875	8550
156	4000	8800
157	4125	9100
158	4250	9350
159	4375	9650
160	4500	9900
161	4625	10200
162	4750	10500
163	4875	10700
164	5000	11000
165	5150	11400
166	5300	11700
167	5450	12000
168	5600	12300
169	5800	12800
170	6000	13200
171	6150	13600
172	6300	13900
173	6500	14300
174	6700	14800
175	6900	15200
176	7100	15700
177	7300	16100
178	7500	16500
179	7750	17100

Load Index Numbers		
LI	KG	LBS
180	8000	17600
181	8250	18200
182	8500	18700
183	8750	19300
184	9000	19800
185	9250	20400
186	9500	20900
187	9750	21500
188	10000	22000
189	10300	22700
190	10600	23400
191	10900	24000
192	11200	24700
193	11500	25400
194	11800	26000
195	12150	26800
196	12500	27600
197	12850	28300
198	13200	29100
199	13600	30000
200	14000	30900
201	14500	32000
202	15000	33100
203	15500	34200
204	16000	35300
205	16500	36400
206	17000	37500
207	17500	38600
208	18000	39700
209	18500	40800
210	19000	41900
211	19500	43000
212	20000	44100
213	20600	45400
214	21200	46700
215	21800	48100
216	22400	49400
217	23000	50700
218	23600	52000
219	24300	53600
220	25000	55100
221	25750	56800
222	26500	58400
223	27250	60000
224	28000	61500

Load Index Numbers		
LI	KG	LBS
225	29000	64000
226	30000	66000
227	30750	68000
228	31500	69500
229	32500	71500
230	33500	74000
231	34500	76000
232	35500	78500
233	36500	80500
234	37500	82500
235	38750	85500
236	40000	88000
237	41250	91000
238	42500	93500
239	43750	96500
240	45000	99000
241	46250	102000
242	47500	104500
243	48750	107500
244	50000	110000
245	51500	113500
246	53000	117000
247	54500	120000
248	56000	123500
249	58000	128000
250	60000	132500
251	61500	135500
252	63000	139000
253	65000	143500
254	67000	147500
255	69000	152000
256	71000	156500
257	73000	161000
258	75000	165500
259	77500	171000
260	80000	176500
261	82500	182000
262	85000	187500
263	87500	193000
264	90000	198500
265	92500	204000
266	95000	209500
267	97500	215000
268	100000	220500
269	103000	227000

Speed Symbols		
Speed Symbol	Speed Category	
	km/h	MPH
A1	5	2.5
A2	10	5
A3	15	10
A4	20	12.5
A5	25	15
A6	30	20
A7	35	22.5
A8	40	25
B	50	30

Speed Symbols		
Speed Symbol	Speed Category	
	km/h	MPH
C	60	35
D	65	40
E	70	43
F	80	50
G	90	55
J	100	62
K	110	68
L	120	75



# MAXAM OTR TIRE LIMITED WARRANTY

## LIMITED WARRANTY

The following warranty contains certain rights and obligations that pertain to MAXAM branded Off-The-Road (OTR), Industrial, Construction, Bias Agricultural, large Mining tires and Forestry tires. Please review these rights and obligations carefully.

## DEFINITION

This Limited Warranty covers all MAXAM branded Off-The-Road (OTR), Industrial, Construction, large Mining tires, Bias Agricultural and Forestry tires as designated in MAXAM OTR and AG product listings (price books, catalogs and leaflets). This does not apply to used, DA, or "NA" (not adjustable) tires.

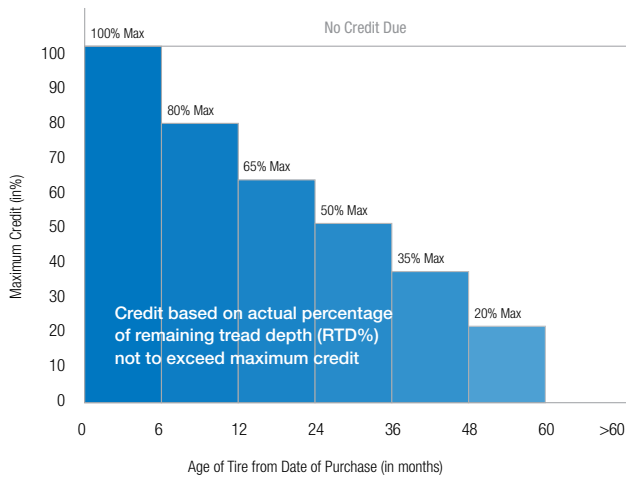
## ELIGIBILITY

Every tire bearing the name MAXAM and with a complete serial number moulded in the side-wall is warranted to be free from manufacturing defects within the manufacturer's control. If an examination by an authorized MAXAM representative shows that any such tire failed as a result of manufacturing defects, it will, at the option of MAXAM, either be repaired at no charge, or a credit will be issued toward the purchase price of a replacement tire, being a comparable MAXAM OTR product. This credit will be determined by applying the lesser of the percentage of remaining tread depth (RTD%) and the maximum age based credit shown in the following chart. The replacement percentage will be multiplied by the original purchase price of the tire (excluding any taxes or duties) to determine the amount of credit to be applied. Customer is responsible for the disposal of all adjusted tires. This warranty coverage is for tires used within published designed specifications for MAXAM tires. To be eligible for warranty, the tire must have at least 5/32nds (4mm) of remaining tread. The customer will make any claimed tire available for inspection or will coordinate with MAXAM for return shipment to MAXAM upon request. If return shipment is requested, MAXAM will bear all shipping costs and provide Return Goods Authorization and arrange pickup. Any use outside such specifications automatically voids this warranty. Please consult MAXAM technical leaflets, etc. for design specifications.

## TIME PERIOD

This warranty applies for a maximum period of five years (60 months) from date of tire purchase. If no invoice or documentation of the tire purchase can be provided, the date of tire manufacture will be used. The date of manufacture can be determined by the first six digits in the serial number code.

AMOUNT OF CREDIT TO CUSTOMER FOR MANUFACTURING DEFECTS



## LIMITATIONS

This Limited Warranty is applicable to the original purchaser and is not assignable to subsequent purchasers. No MAXAM dealer, agent, or representative has the authority to make or imply any representation, promise or agreement which in any way varies or extends the terms of this warranty. Any tire, no matter how well manufactured, may fail in service or become un-serviceable due to conditions beyond the control of the manufacturer. This Limited Warranty is under no circumstances a representation that a tire failure cannot occur. This limited warranty gives you specific rights and you may also have other rights which may vary from jurisdiction to jurisdiction. To the extent that the provisions of any applicable legislation expressly replace, eliminate, amend or prohibit any term or terms contained herein, such term or terms shall be accordingly replaced, eliminated, amended or extended, as the case may be, in accordance with such legislation.

## LIMITED WARRANTY EXCLUSIONS ALL OTR TIRES AND TUBES

All OTR/AG warranties are subject to the following exclusions:

1. Tire claims submitted more than 60 months from the date of purchase.
2. Tires for which alternative warranties or guarantees have been negotiated.
3. Tires with less than 5/32nds (4mm) remaining tread depth.
4. Tire used under chains. MAXAM does recognize that in many applications tire chains provide enhanced tire protection and may extend tire life. In these cases, MAXAM may extend special negotiated warranties. Please consult your MAXAM representative for details.
5. Damage resulting from misuse, improper mounting, misapplication, use of non-approved rims, improper inflation, overloading, running flat, misalignment or imbalance of wheels/rims, defective brakes or shock absorbers, abuse, wilful damage, oil, chemical action, fire or other externally generated heat, use of studs, water or other material entrapped inside the tire, vehicle damage or road hazards (such as rock cuts, punctures, cut separations, impacts, flex breaks).
6. Claims for irregular wear or rapid tread wear are not covered by this limited warranty.
7. Any tire which is operated above its Ton-Mile per Hour (TMPH) or Tonne-Kilometer per Hour (TKPH) rating.
8. Tires mounted with tubes or o-rings not approved by MAXAM.
9. Repaired or retreaded tires.
10. Any modifications to the tire (added buttress shoulders, re-grooving, re-lugging, etc.) void all warranties.
11. Any material added to the tire (tire fill, sealer, balancer, etc.) is not covered by this limited warranty and will not be compensated for in case of credit being issued for the tire.
12. Use of a solid type fill (such as urethane) voids all warranties.
13. Any costs associated with the repair of tires are not covered unless previously approved by MAXAM.
14. Costs of mounting and balancing following pro-rated replacement or repair of tires or tubes and applicable federal, state, provincial and local taxes, are not covered under this warranty.
15. Cost of disposal of warranted tires. Disposal of tires is the sole responsibility of the customer.
16. All other warranties, including the implied warranties of merchantability and fitness for a particular purpose, are expressly disclaimed to the extent permitted by law.
17. ALL OBLIGATIONS OR LIABILITIES FOR INDIRECT, INCIDENTAL, PUNITIVE OR CONSEQUENTIAL DAMAGE ARE HEREBY EXCLUDED TO THE EXTENT PERMITTED BY LAW, INCLUDING ECONOMIC LOSS, LOSS OF PROFIT, LOSS OF USE OF VEHICLE, LOSS OF TIME, PERSONAL INJURY OR DEATH.

## TO OBTAIN WARRANTY SERVICE

1. Contact an authorized MAXAM dealer or representative. Please be prepared to provide proof of purchase of the product, purchase date and serial number.
2. The authorized dealer or representative will contact MAXAM to arrange the inspection of the tire in question and processing of your claim. The dealer has no authority or responsibility to make the determination as to eligibility for coverage under this warranty.

V.919

MAXAM



**MAXAM TIRE NORTH AMERICA INC.**

300 Rosewood Drive, Suite 102  
Danvers, MA 01923, USA  
T:1-844-MAXAM-NA | F:978-560-0624

**MAXAM INTERNATIONAL LIMITED**

Grosser Hasenpfad 30  
D-60598  
Frankfurt am  
Main, Germany

[WWW.MAXAMTIRE.COM](http://WWW.MAXAMTIRE.COM)

DB.420